

# TYRE CATALOG

2023-2024

PASSENGER & COMMERCIAL TRUCK



# Contents

Passenger & Light Truck Tyre

Commercial Truck Tyre

Passenger

## HIGH PERFORMANCE

KT288 ----- 02

KT277 ----- 03-04

## ULTRA HIGH PERFORMANCE

KT377 ----- 05-06



## HIGHWAY TERRAIN

KT577 ----- 08

## RUGGED TERRAIN

KT788 ----- 09

## ALL TERRAIN

KT766 ----- 10

4\*4 SUV



Van

## LIGHT TRUCK TYRES

KT677 ----- 12

KT678 ----- 13

KT755 ----- 13

## MINI VEHICLE TYRES

KT699A ----- 14



## LONG HUAL 18-22

KTHD1 ----- 19

KTHD3 ----- 19

KTHD7 ----- 20

KTHD9 ----- 20

KTSH1 ----- 21

KTSH2 ----- 21

KTSH5 NEO ---- 22

KTSH1 ECO ---- 22

## OFF-ROAD 30

KTOD1 ----- 30

KTOD8 ----- 30

## WINTER & 4S 32

KTSW ----- 32

KT4S ----- 32

## MIXED SERVICE 24-28

KTMA1 ----- 24

KTMA2 ----- 25

KTMD1 ----- 25

KTMD2 ----- 26

KTMD3 ----- 26

KTMD5 ----- 27

KTMDF ----- 27

KTMT1 ----- 28

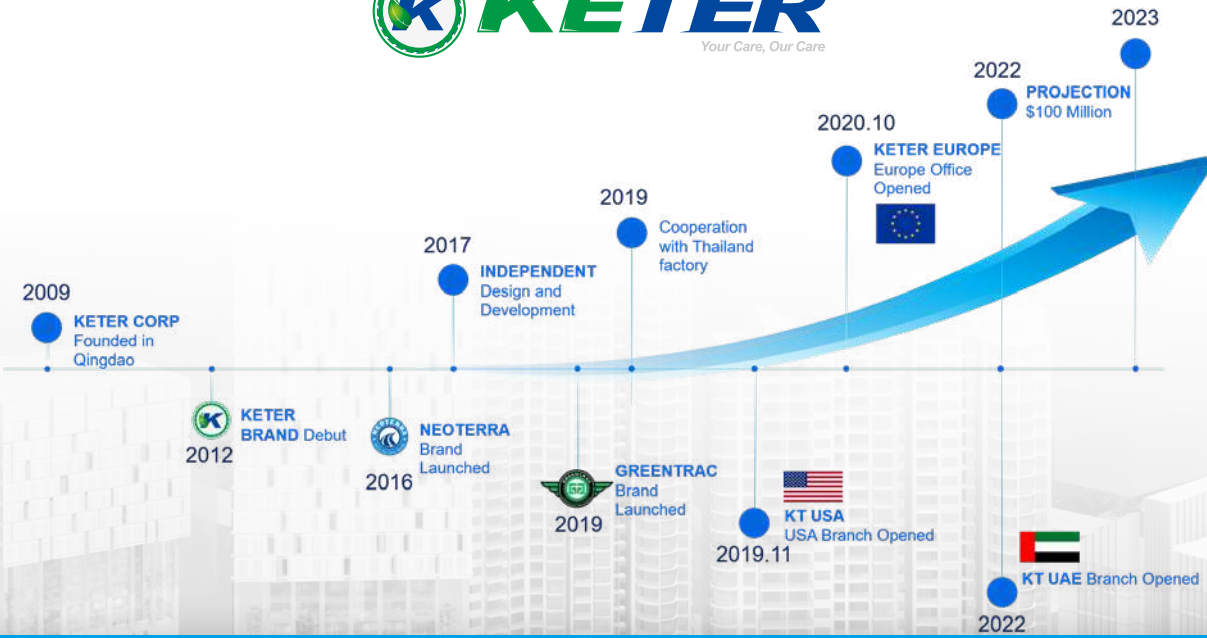
## CLASSIC SERIES 34

KTHD2 ---- 34

KTSH5 ---- 34







- Keter (pronounced like Better), is the Hebrew word for “Crown”, it can also mean “Top” or “Crest”. The Keter Corporation was founded in 2009 with the vision, and mission, to be widely recognized as one of the Top Tire Suppliers in Tire Industry.
- Over the past decade, Keter’s Customer Centric Philosophy has earned the reputation of a different kind of Tire Supplier. It is very easy to do business with us in terms of products, marketing, after sales and communication. We are a Global Product Sourcing Enterprise with a very simple business model that allows us to address the unique needs of our individual customers. Our Customers see us not only as a strategic source for tires, and related products but also as a trusted partner who is committed as much to their success, as to our own.



Passenger



4 x 4 & SUV



Van



# PASSENGER



## HIGH PERFORMANCE

# KT288

High quality, high performance, low carbon and eco-friendly pattern



Green formula reduces rolling resistance and fuel consumption

Wide tread design brings safe ride and enhances wear-resisting performance

Pitching sequence shoulder blocks guarantee outstanding controlling at high speed

	SIZE	LOAD INDEX/ SPEED CODE	STANDARD RIM	OVERALL DIA	SECTION WIDTH	O.T.D (mm)/32nds				UTQG
15	195/70R15	92 S	6J	655 / 25.8	201 / 7.9	7.0 / 8.8	E	C	71	340AA
15	205/70R15	96 H	6J	669 / 26.3	209 / 8.2	7.0 / 8.8	E	C	71	340AA
15	215/70R15	98 T	6 1/2J	683 / 26.9	221 / 8.7	7.0 / 8.8	E	C	71	340AA
15	225/75R15	102 S	6J	719 / 28.3	223 / 8.8	7.0 / 8.8	E	C	71	340AA
16	195/50R16	84 V	6J	602 / 23.7	201 / 7.9	7.0 / 8.8	E	C	71	340AA
16	195/55R16	91 H	6J	620 / 24.4	201 / 7.9	7.0 / 8.8	E	C	72	340AA
16	205/50R16	91/XL V	6 1/2J	312 / 12.3	214 / 8.4	7.2 / 9.1	E	C	72	340AA
16	205/55R16	91 V	6 1/2J	632 / 24.9	214 / 8.4	7.0 / 8.8	E	C	72	340AA
16	205/60R16	92 H	6J	652 / 25.7	209 / 8.2	7.2 / 9.1	E	C	71	340AA
16	205/65R16	95 H	6J	672 / 26.5	209 / 8.2	7.2 / 9.1	E	C	71	340AA
16	215/60R16	99/XL H	6 1/2J	664 / 26.1	221 / 8.7	7.2 / 9.1	E	C	72	340AA
16	215/65R16	98 H	6 1/2J	686 / 27.0	221 / 8.7	7.2 / 9.1	E	C	71	340AA
16	225/55R16	99/XL V	7J	654 / 25.7	233 / 9.2	7.2 / 9.1	E	C	72	340AA
16	225/60R16	98 H	6 1/2J	676 / 26.6	228 / 9.0	7.2 / 9.1	E	C	71	340AA
17	205/55R17	91 H	6 1/2J	658 / 25.9	214 / 8.4	7.2 / 9.1	E	C	71	340AA
17	215/55R17	94 V	7J	668 / 26.3	226 / 8.9	7.2 / 9.1	E	C	71	340AA
17	215/60R17	96 H	6 1/2J	690 / 27.2	221 / 8.7	7.2 / 9.1	E	C	71	340AA
17	215/65R17	99 V	6 1/2J	712 / 28.0	221 / 8.7	7.2 / 9.1	E	C	71	340AA
17	225/55R17	97 V	7J	680 / 26.8	233 / 9.2	7.2 / 9.1	E	C	71	340AA
17	225/60R17	99 H	6 1/2J	702 / 27.6	228 / 9.0	7.2 / 9.1	E	C	71	340AA
17	225/65R17	102 H	6 1/2J	724 / 28.5	221 / 8.7	7.2 / 9.1	E	C	71	400AB
18	225/60R18	100 V	6 1/2J	727 / 28.6	228 / 9.0	7.4 / 9.3	E	C	71	340AA
18	235/50R18	101/XL V	7 1/2J	693 / 27.3	245 / 9.6	7.4 / 9.3	E	C	72	340AA



**HIGH PERFORMANCE**

# KT277

High quality, high performance, low carbon and eco-friendly pattern, modern green tyre.



- Effective drainage performance
- New formula reduced 30%-40% rolling resistance, fuel consumption
- Stronger grip ability and the safety on driving



SIZE	LOAD INDEX/SPEED CODE	STANDARD RIM	OVERALL DIA	SECTION WIDTH	O.T.D (mm)/32nds				UTQG	
12	145/70R12	69 Q	4.50B	509 / 20.0	150 / 5.9	6.8 / 8.6	C	C	70	240AB
12	155/70R12	73 T	4.50B	523 / 20.6	157 / 6.2	6.8 / 8.6	C	C	70	240AB
12	165/70R12	77 T	5.00B	537 / 21.1	170 / 6.7	6.8 / 8.6	C	C	70	340AB
13	155/65R13	73 Q	4.50B	532 / 20.9	157 / 6.2	6.8 / 8.6	C	C	70	340AB
13	155/70R13	75 T	4.50B	548 / 21.6	157 / 6.2	6.8 / 8.6	C	C	70	340AB
13	165/65R13	77 T	-	-	-	6.8 / 8.6	C	C	70	340AB
13	165/70R13	79 S	5.00B	562 / 22.1	170 / 6.7	6.8 / 8.6	C	C	70	340AB

SIZE	LOAD INDEX/SPEED CODE	STANDARD RIM	OVERALL DIA	SECTION WIDTH	O.T.D (mm)/32nds				UTQG	
13	175/70R13	82 S	5.00B	576 / 22.7	177 / 7.0	6.8 / 8.6	C	C	70	340AB
13	185/70R13	86 T	5.50B	590 / 23.2	189 / 7.4	6.8 / 8.6	C	C	70	340AB
14	155/65R14	75 H	4 1/2J	558 / 22.0	157 / 6.2	6.8 / 8.6	C	C	70	340AB
14	165/60R14	75 T	5J	554 / 21.8	170 / 6.7	6.8 / 8.6	C	C	70	340AB
14	165/65R14	79 H	5J	570 / 22.4	170 / 6.7	6.8 / 8.6	C	C	70	340AB
14	175/65R14	82 T	5J	584 / 23.0	177 / 7.0	7.0 / 8.8	C	C	70	340AB
14	185/60R14	82 H	5 1/2J	578 / 22.8	189 / 7.4	7.0 / 8.8	C	C	70	340AA
14	185/65R14	86 T	5 1/2J	596 / 23.5	189 / 7.4	7.0 / 8.8	C	C	70	340AB
14	185/70R14	88 T	5 1/2J	616 / 24.3	189 / 7.4	7.0 / 8.8	C	C	70	340AA
14	195/70R14	95/XL H	6J	630 / 24.8	201 / 7.9	7.0 / 8.8	C	C	72	340AA
14	205/60R14	88 H	6J	602 / 23.7	209 / 8.2	7.0 / 8.8	C	C	71	340AA
14	215/70R14	96 H	6 1/2J	658 / 25.9	221 / 8.7	7.0 / 8.8	C	C	71	340AB
15	185/55R15	82 V	6J	585 / 23.0	194 / 7.6	7.0 / 8.8	C	C	70	340AA
15	185/60R15	88 H	5 1/2J	603 / 23.7	189 / 7.4	7.0 / 8.8	C	C	71	340AA
15	185/65R15	88 H	5 1/2J	621 / 24.4	189 / 7.4	7.0 / 8.8	C	C	70	340AA
15	195/50R15	82 V	6J	577 / 22.7	201 / 7.9	7.0 / 8.8	C	C	71	340AA
15	195/55R15	85 V	6J	595 / 23.4	201 / 7.9	7.0 / 8.8	C	C	71	340AA
15	195/60R15	88 H	6J	615 / 24.2	201 / 7.9	7.0 / 8.8	C	C	71	340AA
15	195/65R15	91 V	6J	635 / 25.0	201 / 7.9	7.0 / 8.8	C	C	71	340AA
15	205/60R15	91 H	6J	627 / 24.7	209 / 8.2	7.0 / 8.8	C	C	71	340AA
15	205/65R15	94 V	6J	647 / 25.5	209 / 8.2	7.0 / 8.8	C	C	71	340AA
16	195/60R16	93/XL H	6J	640 / 25.2	201 / 7.9	7.0 / 8.8	C	C	72	340AA
16	205/55R16	91 V	6 1/2J	632 / 24.9	214 / 8.4	7.0 / 8.8	C	C	71	340AA



ULTRA HIGH PERFORMANCE

# KT377

UHP Asymmetric Pattern Tyre Series 3D asymmetric pattern design takes superior grip performance and shorter braking distances.



- Superior grip performance and shorter braking distances
- Good handling ability
- Good driving stability

SIZE	LOAD INDEX/SPEED CODE	STANDARD RIM	OVERALL DIA	SECTION WIDTH	O.T.D (mm)/2nds		UTQG
16	205/45ZR16	87/XL W	7J	590 / 23.2	206 / 8.1	7.6 / 9.6	C B 72 340AA
16	225/50R16	96/XL V	7J	632 / 24.9	233 / 9.2	7.6 / 9.6	C B 72 340AA
17	205/50ZR17	93/XL W	6 1/2J	638 / 25.1	214 / 8.4	7.6 / 9.6	C B 72 340AA
17	215/40ZR17	87/XL W	7 1/2J	604 / 23.8	218 / 8.6	7.6 / 9.6	C B 72 340AA
17	215/45ZR17	91/XL W	7J	626 / 24.6	213 / 8.4	7.6 / 9.6	C B 72 340AA
17	215/50ZR17	95/XL W	7J	648 / 25.5	226 / 8.9	7.6 / 9.6	C B 72 340AA
17	225/45ZR17	94/XL W	7 1/2J	634 / 25.0	225 / 8.9	7.6 / 9.6	C B 72 340AA
17	225/50ZR17	98/XL W	7J	658 / 25.9	233 / 9.2	8.2 / 10.3	C B 72 340AA
17	235/45ZR17	97/XL W	8J	644 / 25.4	236 / 9.3	8.2 / 10.3	C B 72 340AA
17	235/50R17	100/XL V	7 1/2J	668 / 26.3	245 / 9.6	8.2 / 10.3	C B 72 340AA
17	235/55R17	103/XL V	7 1/2J	690 / 27.2	245 / 9.6	8.2 / 10.3	C B 72 340AA
17	245/45ZR17	99/XL W	8J	652 / 25.7	243 / 9.6	8.2 / 10.3	C B 72 340AA
18	215/40ZR18	89/XL W	7 1/2J	629 / 24.8	218 / 8.6	8.2 / 10.3	C B 72 340AA
18	215/45ZR18	93/XL W	7J	651 / 25.6	213 / 8.4	8.2 / 10.3	C B 72 340AA

SIZE	LOAD INDEX/SPEED CODE	STANDARD RIM	OVERALL DIA	SECTION WIDTH	O.T.D (mm)/2nds		UTQG
18	215/55R18	99/XL V	7J	693 / 27.3	226 / 8.9	8.2 / 10.3	C B 72 340AA
18	225/40ZR18	92/XL W	8J	637 / 25.1	230 / 9.1	8.2 / 10.3	C B 72 340AA
18	225/45ZR18	95/XL W	7 1/2J	659 / 25.9	225 / 8.9	8.2 / 10.3	C B 72 340AA
18	225/50R18	99/XL V	7J	683 / 26.9	233 / 9.2	8.2 / 10.3	C B 72 340AA
18	235/40ZR18	95/XL W	8 1/2J	645 / 25.4	241 / 9.5	8.2 / 10.3	C B 72 340AA
18	235/45ZR18	98/XL W	8J	669 / 26.3	236 / 9.3	8.2 / 10.3	C B 72 340AA
18	235/55R18	104/XL V	7 1/2J	715 / 28.1	245 / 9.6	8.2 / 10.3	C B 72 340AA
18	235/60R18	103 V	7J	739 / 29.1	240 / 9.4	8.2 / 10.3	C B 71 340AA
18	245/40ZR18	97/XL W	8 1/2J	653 / 25.7	248 / 9.8	8.2 / 10.3	C B 72 340AA
18	245/45ZR18	100/XL W	8J	677 / 26.7	243 / 9.6	8.2 / 10.3	C B 72 340AA
18	255/35ZR18	94/XL W	9J	635 / 25.0	260 / 10.2	8.2 / 10.3	C B 73 340AA
18	255/50R18	106/XL V	8J	713 / 28.1	265 / 10.4	8.2 / 10.3	C B 73 340AA
18	255/55R18	109/XL V	8J	737 / 29.0	265 / 10.4	8.2 / 10.3	C B 73 340AA
18	265/35ZR18	97/XL W	9 1/2J	643 / 25.3	271 / 10.7	8.2 / 10.3	C B 73 340AA
18	265/60R18	110 H	8J	775 / 30.5	272 / 10.7	8.2 / 10.3	C B 72 340AA
19	215/35ZR19	85/XL W	7 1/2J	633 / 24.9	218 / 8.6	8.2 / 10.3	C B 72 340AA
19	225/35ZR19	88/XL W	8J	641 / 25.2	230 / 9.1	8.2 / 10.3	C B 72 340AA
19	225/40ZR19	93/XL W	8J	663 / 26.1	230 / 9.1	8.2 / 10.3	C B 72 340AA
19	235/35ZR19	91/XL W	8 1/2J	647 / 25.5	241 / 9.5	8.2 / 10.3	C B 72 340AA
19	235/50R19	103/XL V	7 1/2J	719 / 28.3	245 / 9.6	8.2 / 10.3	C B 72 340AA
19	235/55R19	105/XL V	7 1/2J	741 / 29.2	245 / 9.6	8.2 / 10.3	C B 72 340AA
19	245/35ZR19	93/XL W	8 1/2J	655 / 25.8	248 / 9.8	8.2 / 10.3	C B 72 340AA
19	245/40ZR19	98/XL W	8 1/2J	679 / 26.7	248 / 9.8	8.2 / 10.3	C B 72 340AA
19	245/50R19	105/XL V	7 1/2J	729 / 28.7	253 / 10.0	8.2 / 10.3	C B 72 340AA
19	255/55R19	111/XL V	8J	763 / 30.0	265 / 10.4	8.4 / 10.6	C B 73 340AA
19	265/30ZR19	93/XL W	9 1/2J	643 / 25.3	271 / 10.7	8.4 / 10.6	C B 73 340AA
19	275/40ZR19	105/XL W	9 1/2J	703 / 27.7	278 / 10.9	8.4 / 10.6	C B 73 340AA
20	225/35ZR20	93/XL W	8J	666 / 26.2	230 / 9.1	8.4 / 10.6	C B 72 340AA
20	235/30ZR20	88/XL W	8 1/2J	650 / 25.6	242 / 9.5	8.4 / 10.6	C B 72 340AA
20	245/30ZR20	90/XL W	8 1/2J	656 / 25.8	248 / 9.8	8.4 / 10.6	C B 72 340AA
20	245/35ZR20	95/XL W	8 1/2J	680 / 26.8	248 / 9.8	8.4 / 10.6	C B 72 340AA
20	245/40ZR20	99/XL W	8 1/2J	704 / 27.7	248 / 9.8	8.4 / 10.6	C B 72 340AA
20	255/35ZR20	102/XL Y	9J	686 / 27.0	260 / 10.2	8.4 / 10.6	C B 73 340AA
20	265/50ZR20	111/XL W	8 1/2J	774 / 30.5	277 / 10.9	8.4 / 10.6	C B 73 340AA
20	315/35ZR20	110/XL W	11J	728 / 28.7	320 / 12.6	8.4 / 10.6	C B 75 340AA
21	265/40ZR21	105/XL W	9 1/2J	745 / 29.3	271 / 10.7	8.4 / 10.6	C B 73 340AA
21	265/45ZR21	104 W	9J	771 / 30.4	266 / 10.5	8.4 / 10.6	C B 73 340AA
21	295/35ZR21	107/XL W	10 1/2J	739 / 29.1	301 / 11.9	8.4 / 10.6	C B 72 340AA





## HIGHWAY TERRAIN

# KT577

All weather comfortable and energy saving cross-country tyre.



Excellent drainage and steering performance

Fuel Efficient

Low noise, comfortable driving

SIZE	LOAD INDEX/ SPEED CODE	STANDARD RIM	OVERALL DIA	SECTION WIDTH	O.T.D (mm)/32nds				UTQG	
15	235/75R15	105 T	6 1/2J	733 / 28.9	235 / 9.3	8.5 / 10.7	C	C	71	400AB
15	255/70R15	108 T	7 1/2J	739 / 29.1	260 / 10.2	8.5 / 10.7	C	C	72	400AB
15	265/70R15	112 T	8J	753 / 29.6	272 / 10.7	8.5 / 10.7	C	C	72	400AB
16	215/70R16	100 T	6 1/2J	708 / 27.9	221 / 8.7	8.5 / 10.7	C	C	71	400AB
16	225/70R16	103 T	6 1/2J	722 / 28.4	228 / 9.0	8.5 / 10.7	C	C	71	400AA
16	235/60R16	100 H	7J	688 / 27.1	240 / 9.4	8.5 / 10.7	C	C	71	400AA
16	235/70R16	106 T	7J	736 / 29.0	240 / 9.4	8.5 / 10.7	C	C	71	400AB
16	255/70R16	111 T	7 1/2J	764 / 30.1	260 / 10.2	8.5 / 10.7	C	C	72	400AB
16	265/70R16	112 T	8J	778 / 30.6	272 / 10.7	8.5 / 10.7	C	C	72	400AB
16	275/70R16	114 T	8J	792 / 31.2	279 / 11.0	8.5 / 10.7	C	C	72	400AA
17	235/65R17	104 H	7J	738 / 29.1	240 / 9.4	8.5 / 10.7	C	C	71	400AA
17	245/65R17	107 T	7J	750 / 29.5	248 / 9.8	8.5 / 10.7	C	C	71	400AB
17	265/65R17	112 T	8J	776 / 30.6	272 / 10.7	8.5 / 10.7	C	C	72	400AB
17	265/70R17	115 T	8J	804 / 31.7	272 / 10.7	8.5 / 10.7	C	C	72	400AB
18	225/55R18	98 V	7J	703 / 27.7	233 / 9.2	8.5 / 10.7	C	C	71	400AA
18	245/60R18	105 H	7J	751 / 29.6	248 / 9.8	8.5 / 10.7	C	C	71	400AA
18	255/70R18	113 T	7 1/2 J	815 / 32.1	260 / 10.2	8.5 / 10.7	C	C	72	400AB
18	265/70R18	116 T	8J	829 / 32.6	272 / 10.7	8.5 / 10.7	C	C	72	400AB
20	275/55R20	117/XL H	8 1/2J	810 / 31.9	284 / 11.2	8.5 / 10.7	B	C	73	420AA



# 4X4 SUV







**RUGGED TERRAIN**

# KT788

The special 3D solid pattern design is suitable to the cross-country vehicles on the whole road, with supreme anti-skip performance and extreme severe road passability.



- Stronger pattern design
- Anti-collision wall in sidewall
- Better wear resistance



**ALL TERRAIN**

# KT766

Rectangle shoulder and wide tread design with 3D multiple thin sipes provides superior traction, combines off-road capability in all conditions with on-road comfortable features.



- Rectangle shoulder and wide tread design with 3D sipes
- Unique lateral flange protector design
- Wide pyramidal-shaped sipes for all-weather and various roads

	SIZE	PR/LR	LOAD INDEX/SPEED CODE	STANDARD RIM	OVERALL DIA	SECTION WIDTH	O.T.D (mm)/32nds		UTQG
16	LT265/75R16	10 / E	123/120 S	7 1/2J	810 / 31.9	267 / 10.5	12.5 / 15.7	- - -	500AB
16	LT285/75R16	10 / E	126/123 S	8J	840 / 33.1	286 / 11.3	12.5 / 15.7	- - -	500AB
17	33x12.50R17LT	10 / E	120 Q	10J	832 / 32.8	318 / 12.5	13.5 / 17.0	- - -	500AB
17	35x12.50R17LT	10 / E	125 Q	10J	883 / 34.8	318 / 12.5	13.5 / 17.0	- - -	500AB
17	LT265/70R17	10 / E	121/118 S	8J	810 / 31.9	272 / 10.7	13.5 / 17.0	- - -	500AB
17	P265/70R17	-	115 T	8J	810 / 31.9	272 / 10.7	13.5 / 17.0	- - -	500AB
17	LT285/70R17	10 / E	121/118 S	8 1/2J	838 / 33.0	292 / 11.5	13.5 / 17.0	- - -	500AB
17	P285/70R17	-	117 T	8 1/2J	838 / 33.0	292 / 11.5	13.5 / 17.0	- - -	500AB
18	33x12.50R18LT	10 / E	118 Q	10J	832 / 32.8	318 / 12.5	14.5 / 18.3	- - -	500AB
18	35x12.50R18LT	10 / E	123 Q	10J	883 / 34.8	318 / 12.5	14.5 / 18.3	- - -	500AB
18	37x13.50R18LT	10 / E	124 Q	11J	934 / 36.8	345 / 13.6	14.5 / 18.3	- - -	500AB
20	33x12.50R20LT	10 / E	114 Q	10J	832 / 32.8	318 / 12.5	14.5 / 18.3	- - -	500AB
20	35x12.50R20LT	10 / E	121 Q	10J	883 / 34.8	318 / 12.5	14.5 / 18.3	- - -	500AB
20	37x13.50R20LT	10 / E	127 Q	11J	934 / 36.8	345 / 13.6	14.5 / 18.3	- - -	500AB
20	P275/60R20	-	115 T	8J	844 / 33.2	279 / 11.0	14.5 / 18.3	- - -	500AB
22	33x12.50R22LT	10 / E	114 Q	10J	832 / 32.8	318 / 12.5	14.5 / 18.3	- - -	500AB
22	35x12.50R22LT	10 / E	117 Q	10J	883 / 34.8	318 / 12.5	14.5 / 18.3	- - -	500AB
24	33x12.50R24LT	10 / E	104 Q	10J	832 / 32.8	318 / 12.5	14.5 / 18.3	- - -	500AB

	SIZE	PR/LR	LOAD INDEX/SPEED CODE	STANDARD RIM	OVERALL DIA	SECTION WIDTH	O.T.D (mm)/32nds		UTQG
15	30x9.50R15LT	6 / C	104 S	7 1/2 J	750 / 29.5	240 / 9.4	10.5 / 13.2	- - -	420AA
15	31x10.5R15LT	6 / C	109 S	8 1/2 J	775 / 30.5	268 / 10.6	10.5 / 13.2	- - -	420AA
15	LT215/75R15	6 / C	100/97 S	6J	703 / 27.7	216 / 8.5	10.5 / 13.2	- - -	420AA
15	LT225/75R15	6 / C	102/99 S	6J	719 / 28.3	223 / 8.8	10.5 / 13.2	- - -	420AA
15	LT235/75R15	6 / C	104/101 Q	6 1/2 J	733 / 28.9	235 / 9.3	10.5 / 13.2	- - -	420AA
16	225/75R16LT	10 / E	115/112 R	6J	744 / 29.3	223 / 8.8	10.5 / 13.2	- - -	420AA
16	LT235/70R16	6 / C	104/101 Q	6J	736 / 29.0	240 / 9.4	10.5 / 13.2	- - -	420AA
16	LT235/85R16	8 / D	114/111 R	6 1/2 J	806 / 31.7	235 / 9.3	10.5 / 13.2	- - -	420AA
16	245/70R16	-	107 S	7J	750 / 29.5	248 / 9.8	10.5 / 13.2	- - -	400AB
16	LT245/75R16	10 / E	120/116 Q	7J	774 / 30.5	248 / 9.8	10.5 / 13.2	- - -	420AA
16	LT265/70R16	8 / D	117/114 S	8J	778 / 30.6	272 / 10.7	10.5 / 13.2	- - -	420AA
17	225/65R17	-	102 T	6 1/2 J	724 / 28.5	228 / 9.0	10.5 / 13.2	- - -	400AB
17	235/65R17	-	104 T	7J	738 / 29.1	240 / 9.4	10.5 / 13.2	- - -	400AB
17	LT245/65R17	8 / D	111/108 S	7J	750 / 29.5	248 / 9.8	10.5 / 13.2	- - -	420AA
17	LT265/65R17	10 / E	120/117 S	8J	776 / 30.6	272 / 10.7	10.5 / 13.2	- - -	420AA
17	LT285/70R17	10 / E	121/118 R	8 1/2 J	832 / 32.8	292 / 11.5	10.5 / 13.2	- - -	420AA
18	235/60R18	-	103 T	7J	739 / 29.1	240 / 9.4	10.5 / 13.2	- - -	400AB
18	235/65R18	-	106 H	7J	763 / 30.0	240 / 9.4	10.5 / 13.2	- - -	420AA
18	LT275/65R18	10 / E	123/120 R	8J	815 / 32.1	279 / 11.0	10.5 / 13.2	- - -	420AA
18	LT275/70R18	10 / E	125/122 Q	8J	843 / 33.2	279 / 11.0	10.5 / 13.2	- - -	420AA



# VAN






## LIGHT TRUCK TYRES

# KT677



- High performance of stable steerability and irregular anti-wearing
- Good water outlet performance

	SIZE	PR/LR	LOAD INDEX/ SPEED CODE	STANDARD RIM	OVERALL DIA	SECTION WIDTH	O.T.D (mm)/22nds				UTQG
14	185R14C	8 / D	102/100 R	5 1/2J	652 / 25.7	189 / 7.4	7.8 / 9.8	C	B	71	-
15	195/70R15C	8 / D	104/102 R	6J	655 / 25.8	201 / 7.9	8.0 / 10.1	C	B	72	-
15	205/70R15C	8 / D	106/104 R	6J	669 / 26.3	209 / 8.2	8.0 / 10.1	C	B	72	-
15	215/70R15C	8 / D	104/101 R	6 1/2J	683 / 26.9	221 / 8.7	8.0 / 10.1	C	B	72	-
15	225/70R15C	10 / E	112/110 R	6 1/2J	697 / 27.4	228 / 9.0	8.0 / 10.1	C	B	72	-
16	185/75R16C	8 / D	104/102 R	5J	684 / 26.9	184 / 7.2	8.2 / 10.3	C	B	72	-
16	205/65R16C	8 / D	107/105 T	6J	672 / 26.5	209 / 8.2	8.2 / 10.3	C	B	72	-
16	215/75R16C	10 / E	116/114 R	6J	728 / 28.7	216 / 8.5	8.2 / 10.3	C	B	72	-
16	235/65R16C	8 / D	115/113 T	7J	712 / 28.0	240 / 9.4	8.2 / 10.3	C	B	72	-
16	195/75R16C	8 / D	107/105 R	5 1/2J	698 / 27.5	196 / 7.7	8.0 / 10.1	C	B	72	-
16	205/75R16C	8 / D	110/108 R	5 1/2J	714 / 28.1	203 / 8.0	8.0 / 10.1	C	B	72	-
16	215/65R16C	8 / D	110/108 T	6 1/2J	686 / 27.0	221 / 8.7	8.0 / 10.1	C	B	72	-
16	225/65R16C	8 / D	110/108 T	6 1/2J	698 / 27.5	228 / 9.0	8.0 / 10.1	C	B	72	-







**LIGHT TRUCK TYRES**

# KT678



- Excellent braking and steering capability
- Design of extra-deep pattern grooves and outstanding tread compound improves the anti-abrasion capability
- Excellent grip on dry and wet roads for safe ride with zigzagging pattern grooves, robust pattern blocks.

	SIZE	PR/LR	LOAD INDEX/SPEED CODE	STANDARD RIM	OVERALL DIA	SECTION WIDTH
14	185R14C	8 / D	102/100 Q	5 1/2J	652 / 25.7	188 / 7.4
14	195R14C	8 / D	106/104 Q	5 1/2J	668 / 26.3	198 / 7.8
15	195R15C	8 / D	106/104 S	5.50F	693 / 27.3	196 / 7.7



**MINI VEHICLE TYRES**

# KT699A



- Mixed pattern design, suitable for complex road conditions, taking into account drainage and driving performance
- Reinforced design of skeleton material, excellent load capacity

	SIZE	PR/LR	LOAD INDEX/SPEED CODE	STANDARD RIM	OVERALL DIA	SECTION WIDTH
12	5.00R12LT	10 / E	88/86 P	3.50B	568 / 22.4	143 / 5.6
12	5.50R12LT	12 / F	97/95 P	3.50B	595 / 23.4	160 / 6.3
12	145R12C	8 / D	86/84 Q	4.00B	537 / 21.1	145 / 5.7
12	155R12LT	8 / D	88/86 Q	4.50B	553 / 21.8	157 / 6.2



**LIGHT TRUCK TYRES**

# KT755



- Better country-crossing capability with its gripping power and anti-skid performance on wet roads.
- Outstanding performance with high-strength steel cord and cap ply.
- Tranquility with fuzzy arrangement of pattern block without specified peak and with variable sound frequency blocks.

	SIZE	PR/LR	LOAD INDEX/SPEED CODE	STANDARD RIM	OVERALL DIA	SECTION WIDTH
14	215/75R14C	8 / D	104/101 Q	6J	678 / 26.7	216 / 8.5







# TRUCK & BUS TYRE

*Raw material*  
Upgrade

## Treads



**ALL** ribbed smoked rubber

*Super*  
Wear resistant



OTHER BRAND

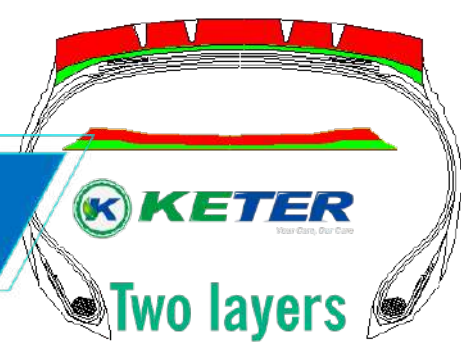
Natural Rubber + Reclaiming Rubber

*Low heating,*  
*Longer mileage*



**Two layers**

upper one is Rim Cushion  
The down part is Base with low heating



OTHER BRAND

Only  
**One Layer**  
rubber design





**Raw material**  
Upgrade

**Inner Liner & Steel Cord**

OTHER BRAND



TL

Butyl rubber + Natural rubber

All butyl rubber

TT

Natural rubber + Reclaiming rubber

All natural rubber



LONG HUAL

**BETTER** anti-corrosion  
**LOW** heating

STEEL CORD

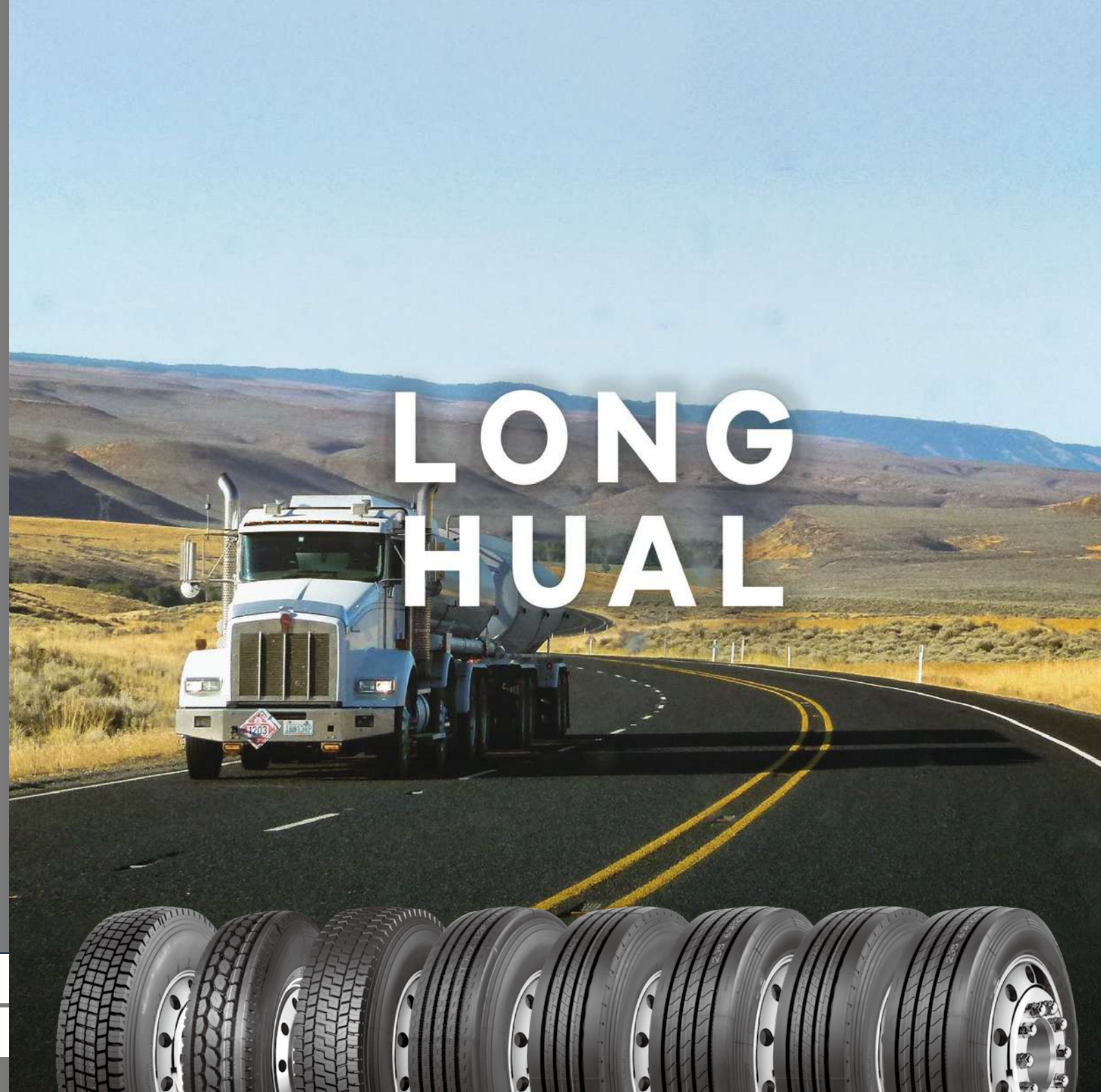


**SUPER**  
high intensity steel

OTHER BRAND

**COMMON**  
intensity steel

**HIGHER** intensity  
**LONGER** life







# KTHD1

Drive



- Special compound maintains good irregular wear resistance.
- Special pattern design provides good anti eccentric wear.



SIZE	PR	LOAD INDEX/ SPEED CODE	STANDARD RIM	OVERALL DIA (mm)/inch	SECTION WIDTH (mm)/inch	LOAD Single/Dual	PRESSURE (kpa/psi)	O.T.D (mm)/inch	TT/TL
295/80R22.5	18	152/149 K	9.00	1044 / 41.1	298 / 11.7	3550/3250	900 / 131	22 / 28	TL
315/80R22.5	20	157/154 K	9.00	1078 / 42.4	312 / 12.3	4125/3750	900 / 131	21.5 / 27	TL



# KTHD3

Drive



- Widened tread design provides excellent driving and gripping power.
- Extra deep tread provides powerful traction and a long tread life.
- Closed shoulder maintains good irregular wear resistance.
- Excellent crack and tear resistance character.



SIZE	PR	LOAD INDEX/ SPEED CODE	STANDARD RIM	OVERALL DIA (mm)/inch	SECTION WIDTH (mm)/inch	LOAD Single/Dual	PRESSURE (kpa/psi)	O.T.D (mm)/inch	TT/TL
11R22.5	16	146/143 M	8.25	1054 / 41.5	279 / 11.0	3000/2725	830 / 120	20.5 / 26	TL
11R24.5	16	149/146 M	8.25	1104 / 43.5	279 / 11.0	3250/3000	830 / 120	21 / 26	TL
295/75R22.5	16	146/143 L	9.00	1014 / 39.9	298 / 11.7	3000/2725	830 / 120	23 / 29	TL



# KTHD7

Drive



- Wide and deep tread design extends tread life
- Special tread pattern deliver a smooth and consistent wear
- Uniform block and lug design brings efficient traction on wet and dry roads



SIZE	PR	LOAD INDEX/ SPEED CODE	STANDARD RIM	OVERALL DIA (mm)/inch	SECTION WIDTH (mm)/inch	LOAD Single/Dual	PRESSURE (kpa/psi)	O.T.D (mm)/inch	TT/TL
11R22.5	16	146/143 M	8.25	1054 / 41.5	279 / 11.0	3000/2725	830 / 120	21.0 / 26.5	TL
11R24.5	16	149/146 M	8.25	1104 / 43.5	279 / 11.0	3250/3000	830 / 120	23.0 / 29.0	TL



# KTHD9

Drive



- Wide and deep tread design extends tread life
- Special tread pattern deliver a smooth and consistent wear
- Uniform block and lug design brings efficient traction on wet and dry roads



SIZE	PR	LOAD INDEX/ SPEED CODE	STANDARD RIM	OVERALL DIA (mm)/inch	SECTION WIDTH (mm)/inch	LOAD Single/Dual	PRESSURE (kpa/psi)	O.T.D (mm)/inch	TT/TL
295/80R22.5	18	152/149 M	9.00	1044 / 41.1	298 / 11.7	3550/3250	900 / 131	19.5 / 25	TL





# KTHS1

Steer/Trailer



- Tiny grooves, less noise & rolling resistance.
- Better braking, higher safety.
- Excellent grip & traction on snowy & icy roads.



SIZE	PR	LOAD INDEX/ SPEED CODE	STANDARD RIM	OVERALL DIA (mm)/inch	SECTION WIDTH (mm)/inch	LOAD Single/Dual	PRESSURE (kpa/psi)	O.T.D (mm)/inch	TT/TL
285/75R24.5	16	147/144 L	8.25	1050 / 41.3	283 / 11.1	3075/2800	830 / 120	14 / 18	TL
295/80R22.5	18	152/149 L	9.00	1044 / 41.1	298 / 11.7	3550/3250	900 / 131	15 / 19	TL
315/80R22.5	20	157/154 L	9.00	1078 / 42.4	312 / 12.3	4125/3750	900 / 131	15 / 19	TL



# KTHS2

Steer/Trailer



- Suitable for medium/long-haul vehicles running on high-grade road.
- Excellent load capacity, straight shallow grooves.
- Straight ride and Anti-sidewall-scuffing performance



SIZE	PR	LOAD INDEX/ SPEED CODE	STANDARD RIM	OVERALL DIA (mm)/inch	SECTION WIDTH (mm)/inch	LOAD Single/Dual	PRESSURE (kpa/psi)	O.T.D (mm)/inch	TT/TL
12R22.5	18	152/149 L	9.00	1085 / 42.7	300 / 11.8	3550/3250	930 / 135	16.5 / 21	TL



# KTHS5 NEO

Steer/Trailer



- Improved tread design, high wear resistance and eccentric wear resistance.
- Low rolling resistance, Less fuel consumption, good handling quality.



SIZE	PR	LOAD INDEX/ SPEED CODE	STANDARD RIM	OVERALL DIA (mm)/inch	SECTION WIDTH (mm)/inch	LOAD Single/Dual	PRESSURE (kpa/psi)	O.T.D (mm)/inch	TT/TL
215/75R17.5	16	127/124 L	6.00	766 / 30.2	216 / 8.5	1750/1600	830 / 120	12/15	TL
235/75R17.5	16	132/129 L	6.75	797 / 31.4	233 / 9.2	2000/1850	830 / 120	13 / 16	TL
11R22.5	16	146/143 M	8.25	1054 / 41.5	279 / 11.0	3000/2725	830 / 120	15.5 / 19.5	TL
12R22.5	18	152/149 L	9.00	1078 / 42.4	296 / 11.7	3550/3250	930 / 135	16.5 / 21	TL
255/70R22.5	16	140/137 M	7.50	930 / 36.6	255 / 10.0	2500/2300	830 / 120	13 / 16	TL
275/70R22.5	18	148/145 M	8.25	958 / 37.7	276 / 10.9	3150/2900	900 / 131	14 / 18	TL
275/80R22.5	18	149/146 L	8.25	1008 / 39.7	280 / 11.0	3250/3000	900 / 131	15 / 19	TL
295/60R22.5	18	150/147 M	9.00	926 / 36.5	292 / 11.5	3350/3075	900 / 131	16 / 20	TL
295/75R22.5	16	146/143 L	9.00	1010 / 39.8	294 / 11.6	3000/2725	830 / 120	15 / 19	TL
295/80R22.5	18	152/149 L	9.00	1044 / 41.1	298 / 11.7	3550/3250	900 / 131	15.5 / 20	TL
11R24.5	16	149/146 L	8.25	1099 / 43.3	274 / 10.8	3250/3000	830 / 120	15.5 / 20	TL



# KTHS1 ECO

Steer/Trailer



- Improved tread design, high wear resistance and eccentric wear resistance.
- Low rolling resistance, Less fuel consumption, good handling quality.



SIZE	PR	LOAD INDEX/ SPEED CODE	STANDARD RIM	OVERALL DIA (mm)/inch	SECTION WIDTH (mm)/inch	LOAD Single/Dual	PRESSURE (kpa/psi)	O.T.D (mm)/inch	TT/TL
295/80R22.5	18	152/149 M	9.00	1044 / 41.1	298 / 11.7	3550/3250	900 / 131	14.5 / 18	TL





# KTMA1

All Position



- Good handling and traction and super abrasion resistance.
- Excellent heat dissipation performance and excellent fuel efficiency.
- Higher original mileage.



SIZE	PR	LOAD INDEX/ SPEED CODE	STANDARD RIM	OVERALL DIA (mm)/inch	SECTION WIDTH (mm)/inch	LOAD Single/Dual	PRESSURE (kpa/psi)	O.T.D (mm)/inch	TT/TL
6.50R16	12	110/105 K	5.50F	750 / 29.5	185 / 7.3	1060/925	670 / 97	10 / 13	TT
7.50R16	14	122/118 L	6.00G	802 / 31.6	212 / 8.3	1500/1320	770 / 112	13 / 16	TT
8.25R16	16	132/128 K	6.50H	802 / 31.6	212 / 8.3	2000/1800	870 / 126	13 / 16	TT
9.00R20	16	144/142 K	7.0	1019 / 40.1	259 / 10.2	2800/2650	900 / 131	15 / 19	TT
10.00R20	18	149/146 K	7.5	1054 / 41.5	278 / 10.9	3250/3000	930 / 135	15.5 / 20	TT
11.00R20	18	152/149 K	8.0	1085 / 42.7	293 / 11.5	3550/3250	930 / 135	16.5 / 21	TT
12.00R20	20	156/153 K	8.5	1125 / 44.3	315 / 12.4	4000/3650	900 / 131	17 / 21	TT
11R22.5	16	146/143 K	8.25	1054 / 41.5	279 / 11.0	3000/2725	830 / 120	15 / 19	TL
13R22.5	18	154/151 K	9.75	1124 / 44.3	320 / 12.6	3750/3450	930 / 135	17 / 21	TL
315/80R22.5	20	157/154 K	9.00	1078 / 42.4	312 / 12.3	4125/3750	900 / 131	15 / 19	TL







# KTMA2

All Position



- Optimized tread blocks improves the grip ability and makes the tyre stay agile in case of sudden movement.
- Air scoop shoulder ensures cool running at high speed, and it ensures longer mileage.
- This technology ensures long tread life under the condition of overloading and long-time running.



SIZE	PR	LOAD INDEX/SPEED CODE	STANDARD RIM	OVERALL DIA (mm)/inch	SECTION WIDTH (mm)/inch	LOAD Single/Dual	PRESSURE (kpa/psi)	O.T.D (mm)/inch	TT/TL
7.00R16	14	118/114 L	5.50F	770 / 30.3	196 / 7.7	1320/1180	770 / 112	11.5 / 14	TT
9.00R20	16	144/142 K	7.0	1019 / 40.1	259 / 10.2	2800/2650	900 / 131	15.5 / 20	TT
10.00R20	18	149/146 K	7.5	1054 / 41.5	278 / 10.9	3250/3000	930 / 135	15.5 / 20	TT
11.00R20	18	152/149 K	8.0	1085 / 42.7	293 / 11.5	3550/3250	930 / 135	16 / 20	TT
12.00R20	20	156/153 K	8.5	1125 / 44.3	315 / 12.4	4000/3650	900 / 131	16.5 / 21	TT
11R22.5	18	149/146 M	8.25	1054 / 41.5	279 / 11.0	3250/3000	930 / 135	16 / 20	TL



# KTMD1

Drive



- Big deep block provide strong traction and braking power
- Open groove and bottom design given excellent self-cleaning performance Reinforced bead and body to strengthen the puncture resistance, tear resistance



SIZE	PR	LOAD INDEX/SPEED CODE	STANDARD RIM	OVERALL DIA (mm)/inch	SECTION WIDTH (mm)/inch	LOAD Single/Dual	PRESSURE (kpa/psi)	O.T.D (mm)/inch	TT/TL
11.00R20	18	152/149 K	8.0	1085 / 42.7	293 / 11.5	3550/3250	930 / 135	20.5 / 26	TT



# KTMD2

Drive



- Big deep blocks provide strong traction and braking power.
- Open groove and bottom design gives excellent self cleaning performance. Reinforced bead and body to strengthen the puncture resistance, tear resistance



SIZE	PR	LOAD INDEX/SPEED CODE	STANDARD RIM	OVERALL DIA (mm)/inch	SECTION WIDTH (mm)/inch	LOAD Single/Dual	PRESSURE (kpa/psi)	O.T.D (mm)/inch	TT/TL
7.50R16	14	122/118 K	6.00G	809 / 31.9	212 / 8.3	1500/1320	770 / 112	15.5 / 20	TT
8.25R16	18	132/128 K	6.50H	855 / 33.7	230 / 9.1	2000/1800	870 / 126	15 / 19	TT
9.00R20	16	144/142 K	7.0	1019 / 40.1	259 / 10.2	2800/2650	900 / 131	18.5 / 23	TT
10.00R20	18	149/146 K	7.5	1054 / 41.5	278 / 10.9	3250/3000	930 / 135	19 / 24	TT
315/80R22.5	20	157/154 K	9.00	1078 / 42.4	312 / 12.3	4125/3750	900 / 131	18 / 23	TL



# KTMD3

Drive



- Excellent puncture and tear resistance of the tread, great driving and breaking performance.
- Deeper pattern, longer mileage.



SIZE	PR	LOAD INDEX/SPEED CODE	STANDARD RIM	OVERALL DIA (mm)/inch	SECTION WIDTH (mm)/inch	LOAD Single/Dual	PRESSURE (kpa/psi)	O.T.D (mm)/inch	TT/TL
9.00R20	16	144/142 K	7.0	1019 / 40.1	259 / 10.2	2800/2650	900 / 131	18.5 / 23	TT
10.00R20	18	149/146 K	7.5	1054 / 41.5	278 / 10.9	3250/3000	930 / 135	18.5 / 23	TT
11.00R20	18	152/149 K	8.0	1085 / 42.7	293 / 11.5	3550/3250	930 / 135	20 / 25	TT
12.00R20	20	156/153 K	8.5	1125 / 44.3	315 / 12.4	4000/3650	900 / 131	20.5 / 26	TT





# KTMD5

## Drive



- Big deep blocks provide strong traction and braking power.
- Open groove and bottom design gives excellent self cleaning performance. Reinforced bead and body to strengthen the puncture resistance, tear resistance



SIZE	PR	LOAD INDEX/ SPEED CODE	STANDARD RIM	OVERALL DIA (mm)/inch	SECTION WIDTH (mm)/inch	LOAD Single/Dual	PRESSURE (kpa/psi)	O.T.D (mm)/inch	TT/TL
315/80R22.5	20	157/154 K	9.00	1078 / 42.4	312 / 12.3	4125/3750	900 / 131	20.5 / 26	TL



# KTMT1

## Trailer



- Good handling and traction and super abrasion resistance.
- Excellent heat dissipation performance and excellent fuel efficiency.
- Higher original mileage



SIZE	PR	LOAD INDEX/ SPEED CODE	STANDARD RIM	OVERALL DIA (mm)/inch	SECTION WIDTH (mm)/inch	LOAD Single/Dual	PRESSURE (kpa/psi)	O.T.D (mm)/inch	TT/TL
385/65R22.5	20	160 K	11.75	1072 / 42.2	389 / 15.3	4500	900 / 131	16 / 20	TL



# KTMD5F

## Drive



- Wide and deep tread pattern provides long tread life
- Aggressive diagonal block and lug pattern brings highly effective traction and braking performance
- Tapered grooves and open shoulder prevent stone retention and provide self-cleaning capability
- Special tread compound prevent tread cutting, chipping and chunking



SIZE	PR	LOAD INDEX/ SPEED CODE	STANDARD RIM	OVERALL DIA (mm)/inch	SECTION WIDTH (mm)/inch	LOAD Single/Dual	PRESSURE (kpa/psi)	O.T.D (mm)/inch	TT/TL
11R22.5	16	146/143 M	8.25	1054 / 41.5	279 / 11.0	3000/2725	830 / 120	21.0 / 26.5	TL
11R24.5	16	149/146 M	8.25	1104 / 43.5	279 / 11.0	3250/3000	830 / 120	23.0 / 29.0	TL







# OFF-ROAD



## KTOD1



- Transverse big block type and deepened pattern design, provide superior driving performance.
- The open type groove design has a good self-cleaning ability.
- In particular, reinforced carcass design, provide greater carrying capacity.



SIZE	PR	LOAD INDEX/ SPEED CODE	STANDARD RIM	OVERALL DIA (mm)/inch	SECTION WIDTH (mm)/inch	LOAD Single/Dual	PRESSURE (kpa/psi)	O.T.D (mm)/inch	TT/TL
9.00R20	16	144/142 D	7.0	1026 / 40.4	260 / 10.2	2800/2650	900 / 131	22.5 / 28	TT
10.00R20	18	149/146 D	7.5	1054 / 41.5	274 / 10.8	3250/3000	930 / 135	23 / 29	TT
12.00R20	20	156/153 G	8.5	1125 / 44.3	315 / 12.4	4000/3650	900 / 131	23.5 / 30	TT



## KTOD8



- Transverse big block type and deepened pattern design, provide superior driving performance.
- The open type groove design has a good self-cleaning ability.
- In particular, reinforced carcass design, provide greater carrying capacity.



SIZE	PR	LOAD INDEX/ SPEED CODE	STANDARD RIM	OVERALL DIA (mm)/inch	SECTION WIDTH (mm)/inch	LOAD Single/Dual	PRESSURE (kpa/psi)	O.T.D (mm)/inch	TT/TL
11.00R20	18	152/149 D	8.00	1098 / 43.2	288 / 11.3	3550/3250	930 / 135	24 / 30	TT





# WINTER & 4 SEASON



## KTSW

Drive



- Special pattern design meet different roads demands, offering longer mileage and saving more cost.
- Unique 3D sipe design provide the blocks extra bite during running, to enhance stability of the whole tread.
- 3D Sipe and common sipe layout in order can be used in different road situations.



SIZE	PR	LOAD INDEX/ SPEED CODE	STANDARD RIM	OVERALL DIA (mm)/inch	SECTION WIDTH (mm)/inch	LOAD Single/Dual	PRESSURE (kpa/psi)	O.T.D (mm)/inch	TT/TL
11R22.5	16	146/143 K	8.25	1060 / 41.7	274 / 10.8	3000/2725	830 / 120	21 / 26	TL
11R24.5	16	149/146 K	8.25	1110 / 43.7	274 / 10.8	3250/3000	830 / 120	21 / 26	TL
295/75R22.5	16	146/143 L	9.00	1022 / 40.2	294 / 11.6	3000/2725	830 / 120	23 / 29	TL



## KT4S

Drive



- Deep tread design to maximize longevity.
- 'Snow-World' Design gives the tyres extra bite in snow and mud, avoiding the grip power decreased on snow and mud road condition.
- 'Open Shoulder' Design provides an excellent self-cleaning performance during running.



SIZE	PR	LOAD INDEX/ SPEED CODE	STANDARD RIM	OVERALL DIA (mm)/inch	SECTION WIDTH (mm)/inch	LOAD Single/Dual	PRESSURE (kpa/psi)	O.T.D (mm)/inch	TT/TL
11R22.5	16	146/143 K	8.25	1056 / 41.6	284 / 11.2	3000/2725	720 / 104	22 / 28	TL
11R24.5	16	149/146 K	8.25	1112 / 43.8	274 / 10.8	3250/3000	830 / 120	22 / 28	TL



# CLASSIC SERIES



## KTHD2

### Drive



- Widened tread design provides excellent driving and gripping power.
- Extra deep tread provides powerful traction and a long tread life.
- Closed shoulder maintains good irregular wear resistance.
- Excellent crack and tear resistance character.



SIZE	PR	LOAD INDEX/ SPEED CODE	STANDARD RIM	OVERALL DIA (mm)/inch	SECTION WIDTH (mm)/inch	LOAD Single/Dual	PRESSURE (kpa/psi)	O.T.D (mm)/inch	TT/TL
295/75R22.5	16	146/143 K	9.00	1014 / 39.9	298 / 11.7	3000/2725	830 / 120	22 / 28	TL
285/75R24.5	16	147/144 K	8.25	1050 / 41.3	283 / 11.1	3075/2800	830 / 120	22 / 28	TL



## KTHS5

### Steer/Trailer



- Improved tread design, high wear resistance and eccentric wear resistance.
- Low rolling resistance, Less fuel consumption, good handling quality.



SIZE	PR	LOAD INDEX/ SPEED CODE	STANDARD RIM	OVERALL DIA (mm)/inch	SECTION WIDTH (mm)/inch	LOAD Single/Dual	PRESSURE (kpa/psi)	O.T.D (mm)/inch	TT/TL
11R22.5	16	146/143 M	8.25	1054 / 41.5	279 / 11.0	3000/2725	830 / 120	15 / 19	TL
295/75R22.5	16	146/143 M	9.00	1014 / 39.9	298 / 11.7	3000/2725	830 / 120	15 / 19	TL
11R24.5	16	149/146 M	8.25	1104 / 43.5	279 / 11.0	3250/3000	830 / 120	15 / 19	TL





## **QINGDAO NEW KETER TYRE CO., LTD**

ADD: A-2502, Darron Center, No.180 Haier Road, Qingdao, China, 266100

Tel: 86-532-55579147, 86-532-55579148

Fax: 86-532-55579145 E-mail: [info@ketertyre.com](mailto:info@ketertyre.com)