



QINGDAO NEW KETER TYRE CO., LTD

  @Keter Tyre

ADD: A-25FL, Darron Center, No.180 Haier Road, Qingdao, China, 266100

Tel: 86-532-55579147 Fax: 86-532-55579145

E-mail: info@keter tyre.com Web: <https://www.keter tyre.com>



OTR TYRE

PRODUCT CATALOG



QINGDAO NEW KETER TYRE CO., LTD

GREENTRAC TYRE

HAVE BEEN SOLD WORLDWIDE

all over the world Since 2009
176 countries **2000+** Customers

EUROPE 2020
 KETER EUROPE
 European Office
 Established

CHINA 2009
 KETER CORP
 Founded in Qingdao

USA 2019.11
 KETER USA
 USA Branch

UAE 2022
 KETER UAE
 Branch

YOKOHAMA TOYO TIRES HANKOOK

Unique high quality products

Value for money, Earning potential

Regional market protection

Fast decision making and

Customized Marketing

Cooperative R & D



MAXXIS SUNTOMO TIRES CST



GLOBAL TECH SUPPORT

GLOBAL ENGINEERING TEAM

We have a GLOBAL ENGINEERING TEAM with German "gene", to create our own patterns and optimize formula.

PCR TEAM

TBR TEAM

OTR & AG TEAM



13 PASSENGER & LIGHT TRUCK Patterns

9 COMMERCIAL TRUCK Patterns

450+ SIZES

INDEPENDENT DESIGN BY GREENTRAC

ALL SERIES are Independently Developed by Greentrac



GREENTRAC OTR TYRE INDUSTRIAL CODE

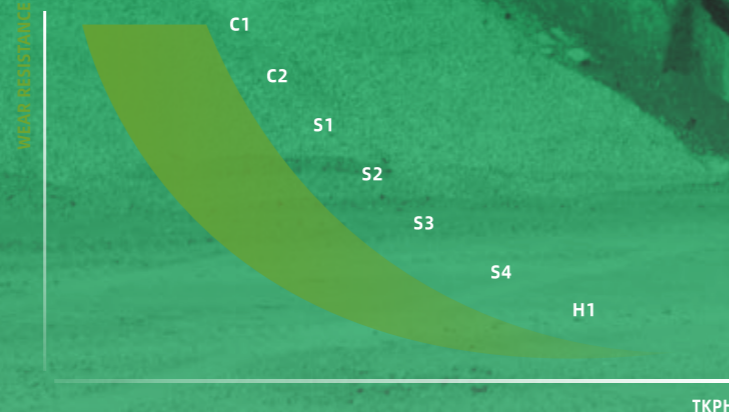
OFF-THE-ROAD TIRES

Code	Tread Type	Tread Depth	Application
E-2	Traction	Regular	Crane
E-3	Rock	Regular	Earthmover
E-4	Rock	Deep	
E-7	Flotation	Shallow	
G-1	Rib	Regular	Grader
G-2	Traction	Regular	
L-2	Traction	Regular	Loader & Dozer
L-3	Rock	Regular	
L-4	Rock	Deep	
L-5	Rock	Extra Deep	
L-3S	Smooth	Regular	
L-4S	Smooth	Deep	
L-5S	Smooth	Extra Deep	
C-1	Smooth	Regular	Compactor
C-2	Grooved	Regular	

GREENTRAC OTR TYRE TREAD COMPOUND

Cut resistant compound: C1/C2 Heat resistant compound: H1 Standard compound: S1/S2/S3/S4

TYPE	TKPH
C1	MINIMUM
C2	LOW
S1	MODERATE
S2	AVERAGE
S3	HIGH
S4	VERY HIGH
H1	HIGHEST



CONTENT

01 TYRE TREAD SUMMARY 01/02

02 RADIAL OFF-THE-ROAD TIRES TREAD PATTERN AND SIZE 03

- Loader and Earthmover 04-08
- Grader 09-10
- Mobile Crane 11-12
- Sand 13-14
- Underground Mine 15-16
- Multi Purpose Turck 17
- Mining Dumping Truck 18-20

03 BIAS OFF-THE-ROAD TIRES TREAD PATTERN AND SIZE 21

- Loader and Earthmover 22-27
- Grader 28-30
- Underground Mine 31-33
- Dessert Application Sand 34
- Industrial 35-36
- Compactor 37-38
- Rigid Dump Trucks 39-40
- Dump Trucks 41
- Industrial 42-46

TYRE TREAD SUMMARY

RADIAL OFF-THE-ROAD TIRES TREAD PATTERN AND SIZE

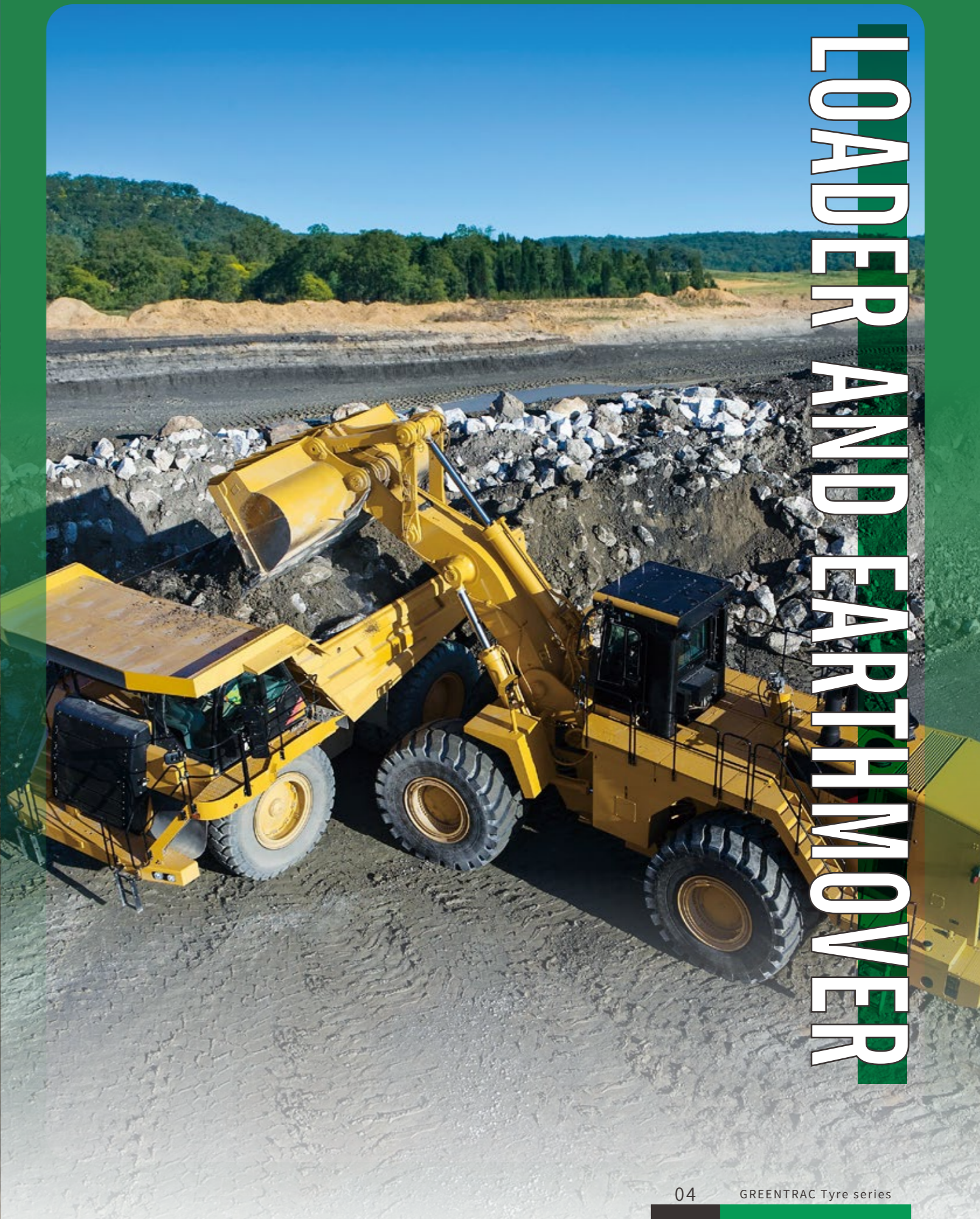


BIAS OFF-THE-ROAD TIRES TREAD PATTERN AND SIZE





RADIAL OFF-THE-ROAD TIRES TREAD PATTERN AND SIZE



LOADER AND EARTHMOVER



GR302 E-3/L-3 RADIAL

- Non-directional pattern for outstanding traction.
- Designed for operating on rock, coal and earth surface.
- Wide aggressive tread design for excellent handling and lateral adhesion.

LOADER AND EARTHMOVER SERVICE



Size	Load index	TRA code	Speed index	Rim	Section width (mm)/inch		Overall diameter (mm)/inch		Tread depth (mm)/32nds		Load capacity (kg)	Inflation pressure (kPa)(psi)		Type
17.5R25	☆☆	E-3/L-3	A2	14.00/1.5	445	17.5	1348	53.1	27	34.0	8500	650	94	TL
20.5R25	☆☆	E-3/L-3	A2	17.00/2.0	521	20.5	1493	58.8	30	37.8	11500	650	94	TL
23.5R25	☆☆	L-3	A2	19.50/2.5	597	23.5	1617	63.7	33	41.6	14500	650	94	TL
26.5R25	☆☆	L-3	A2	22.00/3.0	673	26.5	1750	68.9	36	45.4	18500	650	94	TL
29.5R25	☆☆	L-3	A2	25.00/3.5	749	29.5	1874	73.8	39	49.1	22400	650	94	TL



GR2015 E-2/L-2 RADIAL

- Suitable for icy, packed or soft snow surface.
- Optimized tread pattern for maximum traction.
- Unique tread compound improves tread life.

LOADER AND EARTHMOVER SERVICE



Size	Load index	TRA code	Speed index	Rim	Section width (mm)/inch		Overall diameter (mm)/inch		Tread depth (mm)/32nds		Load capacity (kg)	Inflation pressure (kPa)(psi)		Type
15.5R25	☆☆	E-2/L-2	A2	12.00/1.3	394	15.5	1278	50.3	24	30.2	7100	650	94	TL
17.5R25	☆☆	E-2/L-2	A2	14.00/1.5	445	17.5	1348	53.1	27	34.0	8500	650	94	TL
20.5R25	☆☆	E-2/L-2	A2	17.00/2.0	521	20.5	1493	58.8	30	37.8	11500	650	94	TL
23.5R25	☆☆	E-2/L-2	A2	19.50/2.5	597	23.5	1617	63.7	33	41.6	14500	650	94	TL
26.5R25	☆☆	E-2/L-2	A2	22.00/3.0	673	26.5	1750	68.9	36	45.4	18500	650	94	TL



GR303 L-3 RADIAL

- Excellent lateral grip on soft terrain due to self-cleaning tread pattern.
- Excellent traction on rocky, gravel and packed earth surface in mines, quarries and construction sites.
- Enhanced radial construction provides superior flotation and improves stability.

LOADER AND EARTHMOVER SERVICE



Size	Load index	TRA code	Speed index	Rim	Section width (mm)/inch		Overall diameter (mm)/inch		Tread depth (mm)/32nds		Load capacity (kg)	Inflation pressure (kPa)(psi)		Type
26.5R25	☆☆	L-3	A2	22.00/3.0	673	26.5	1750	68.9	44	55.4	18500	650	94	TL
29.5R25	☆☆	L-3	A2	25.00/3.5	749	29.5	1874	73.8	44	55.4	22400	650	94	TL
750/65R25	☆☆	E-3/L-3	A2	24.00/3.0	754	29.7	1611	63.4	45	56.7	18500	625	94	TL
850/65R25	☆☆	E-3/L-3	A2	27.00/3.5	852	33.5	1741	68.5	46	58.0	23000	625	94	TL



GR501 L-5 RADIAL

- Directional tread pattern enhances traction in mud and soft conditions.
- Excellent performance in severe rock application.
- Deep tread depth provides outstanding wearing life.

LOADER AND EARTHMOVER SERVICE



Size	Load index	TRA code	Speed index	Rim	Section width (mm)/inch		Overall diameter (mm)/inch		Tread depth (mm)/32nds		Load capacity (kg)	Inflation pressure (kPa)(psi)		Type
20.5R25	☆☆	L-5	A2	17.00/2.0	521	20.5	1548	60.9	70	88.2	11500	650	94	TL
23.5R25	☆☆	L-5	A2	19.50/2.5	597	23.5	1673	65.9	76	95.7	14500	650	94	TL
26.5R25	☆☆	L-5	A2	22.00/3.0	673	26.5	1798	70.8	85	107.1	18500	650	94	TL
29.5R25	☆☆	L-5	A2	25.00/3.5	749	29.5	1921	75.6	92	115.9	22400	650	94	TL



GR502 L-5 RADIAL

- Combined smooth and lug tread pattern for enhanced cut resistance and traction.
- High-tensile steel belt package for enhanced impact resistance.
- Deep tread depth for extra grip and long wear.

LOADER AND EARTHMOVER SERVICE



Size	Load index	TRA code	Speed index	Rim	Section width (mm)/inch	Overall diameter (mm)/inch	Tread depth (mm)/32nds	Load capacity (kg)	Inflation pressure (kPa)(psi)	Type
17.5R25	☆☆	L-5	A2	14.00/1.0	445 17.5	1399 55.1	63 78.7	8500	650 94	TL
17.5R25	☆☆☆	L-5	A2	14.00/1.5	445 17.5	1399 55.1	63 78.7	8500	800 116	TL
20.5R25	☆☆	L-5	A2	17.00/2.0	521 20.5	1548 60.9	70 88.2	11500	650 94	TL
23.5R25	☆☆	L-5	A2	19.50/2.5	597 23.5	1673 65.9	76 95.7	14500	650 94	TL
26.5R25	☆☆	L-5	A2	22.00/3.0	673 26.5	1798 70.8	85 107.1	18500	650 94	TL
29.5R25	☆☆	L-5	A2	25.00/3.5	749 29.5	1921 75.6	92 115.9	22400	650 94	TL



GR403 E-4 RADIAL

- Special compounds for exceptional wear and cut resistance.
- Self-cleaning tread design provides good traction and stability on the soft and muddy ground.
- Deeper tread depth ensures exceptional tread wear.

LOADER AND EARTHMOVER SERVICE



Size	Load index	TRA code	Speed index	Rim	Section width (mm)/inch	Overall diameter (mm)/inch	Tread depth (mm)/32nds	Load capacity (kg)	Inflation pressure (kPa)(psi)	Type
18.00R33	☆☆	E-4	B	13.00/2.5	498 19.6	1877 65.9	52 65.5	10900	700 102	TL



GR402 E-4 RADIAL

- Special compounds for exceptional wear and cut resistance.
- Self-cleaning tread design provides good traction and stability on the soft and muddy ground.
- Deeper tread depth ensures exceptional tread wear.

LOADER AND EARTHMOVER SERVICE



Size	Load index	TRA code	Speed index	Rim	Section width (mm)/inch	Overall diameter (mm)/inch	Tread depth (mm)/32nds	Load capacity (kg)	Inflation pressure (kPa)(psi)	Type
18.00R25	☆☆	E-4	B	13.00/2.5	498 19.6	1673 65.9	46 58.0	9250	700 102	TT



GR405 E-4 RADIAL

- Non-directional tread design for outstanding traction.
- Enhanced radial construction provides superior flotation and stability.
- Deep tread depth for optimal tread life.

LOADER AND EARTHMOVER SERVICE



Size	Load index	TRA code	Speed index	Rim	Section width (mm)/inch	Overall diameter (mm)/inch	Tread depth (mm)/32nds	Load capacity (kg)	Inflation pressure (kPa)(psi)	Type
20.5R25	☆☆	E-4	B	17.00/2.0	521 20.5	1493 58.8	50 63.0	7300	525 76	TL
23.5R25	☆☆	E-4	B	19.50/2.5	597 23.5	1673 65.9	50 63.0	9250	525 76	TL
26.5R25	☆☆	E-4	B	22.00/3.0	673 26.5	1798 70.8	55 69.3	11500	525 76	TL
29.5R25	☆☆	E-4	B	25.00/3.5	749 29.5	1921 75.6	60 75.6	14000	525 76	TL

GRADER



GR202 G-2/L-2 RADIAL

- Non-directional tread pattern delivers exceptional traction and stability.
- Enhanced sidewall intersection offers improved resistance to damage.
- Unique tread compound offers excellent wear life.
- Light weight provides efficient fuel economy.

GRADER SERVICE



Size	Load index	TRA code	Speed index	Rim	Section width (mm)/inch	Overall diameter (mm)/inch	Tread depth (mm)/32nds	Load capacity (kg)	Inflation pressure (kPa)(psi)	Type
14.00R24	☆	G-2/L-2	A8	8.00TG	362 14.3	1348 53.1	26 32.8	3650	375 54	TL



GR302 E-3/L-3 RADIAL

- Non-directional pattern for outstanding rough terrain traction.
- Designed for operating on rock, coal and earth surface.
- Wide aggressive tread design for excellent handling, outstanding traction and lateral adhesion.

GRADER SERVICE



Size	Load index	TRA code	Speed index	Rim	Section width (mm)/inch	Overall diameter (mm)/inch	Tread depth (mm)/32nds	Load capacity (kg)	Inflation pressure (kPa)(psi)	Type
17.5R25	☆☆	E-3/L-3	B	14.00/1.5	445 17.5	1348 53.1	27 34.0	5450	525 76	TL
20.5R25	☆☆	E-3/L-3	B	17.00/2.0	521 20.5	1493 58.8	30 37.8	7300	525 76	TL
23.5R25	☆☆	L-3	B	19.50/2.5	597 23.5	1617 63.7	33 41.6	9250	525 76	TL



GR2015 E-2/L-2 RADIAL

- Suitable for icy, packed or soft snow surface.
- Optimized tread pattern for maximum traction.
- Unique tread compound improves tread life.

GRADER SERVICE



Size	Load index	TRA code	Speed index	Rim	Section width (mm)/inch	Overall diameter (mm)/inch	Tread depth (mm)/32nds	Load capacity (kg)	Inflation pressure (kPa)(psi)	Type
15.5R25	☆☆	E-2/L-2	B	12.00/1.3	394 15.5	1278 50.3	24 30.2	4500	525 76	TL
17.5R25	☆☆	E-2/L-2	B	14.00/1.5	445 17.5	1348 53.1	27 34.0	5450	525 76	TL
20.5R25	☆☆	E-2/L-2	B	17.00/2.0	521 20.5	1493 58.8	30 37.8	7300	525 76	TL
23.5R25	☆☆	E-2/L-2	B	19.50/2.5	597 23.5	1617 63.7	32 40.3	9250	525 76	TL
26.5R25	☆☆	E-2/L-2	B	22.00/3.0	673 26.5	1750 68.9	35 44.1	11500	525 76	TL

MOBILE CRANE



GR203 E-2 RADIAL

- Optimum casing design ensures even contact distribution which leads even wearing.
- The newly developed compound leads to a remarkable increase in life.

MOBILE CRANE SERVICE



Size	Load index	TRA code	Speed index	Rim	Section width (mm)/inch		Overall diameter (mm)/inch		Tread depth (mm)/32nds		Load capacity (kg)	Inflation pressure (kPa)(psi)		Type
385/95R25	☆☆☆	E-2	E	10.00/1.5	379	14.9	1369	53.9	21	26.5	6000	900	130	TL
445/95R25	☆☆☆	E-2	E	11.25/2.0	435	17.1	1481	58.3	23	29.0	7300	900	130	TL



GR205 E-2 RADIAL

- Longitudinal shoulder design provides good traction and ensure even wear.
- Unique compound and tread design offers high-speed capability while minimizing fuel consumption.

MOBILE CRANE SERVICE



Size	Load index	TRA code	Speed index	Rim	Section width (mm)/inch		Overall diameter (mm)/inch		Tread depth (mm)/32nds		Load capacity (kg)	Inflation pressure (kPa)(psi)		Type
385/95R25	☆☆☆	E-2	E	10.00/1.5	379	14.9	1369	53.9	23	29.0	6000	900	130	TL

SAND



GR309 RADIAL

Excellent traction in a variety of conditions.

SAND SERVICE



Size	Load index	TRA code	Speed index	Rim	Section width (mm)/inch		Overall diameter (mm)/inch		Tread depth (mm)/32nds		Load capacity (kg)	Inflation pressure (kPa)(psi)		Type
14.00R20	20PR	-	-	10.00W	385	15.2	1236	48.7	17.5	22.0	5000	790	115	TT
16.00R20	☆☆	-	-	11.25	447	17.6	1318	51.9	20	25.2	6900	650	94	TL



GR701 E-7 RADIAL

- Optimum tread pattern designed for desert and soft ground.
- Unique shoulder design improves maneuverability on hard surface.
- Heavy load at low inflation pressure.

SAND SERVICE



Size	Load index	TRA code	Speed index	Rim	Section width (mm)/inch		Overall diameter (mm)/inch		Tread depth (mm)/32nds		Load capacity (kg)	Inflation pressure (kPa)(psi)		Type
24R20.5	☆	E-7	F	18.00	600	23.6	1370	53.9	21	26.5	7100	600	87	TL



GR310 RADIAL

Excellent traction in a variety of conditions.

SAND SERVICE



Size	Load index	TRA code	Speed index	Rim	Section width (mm)/inch		Overall diameter (mm)/inch		Tread depth (mm)/32nds		Load capacity (kg)	Inflation pressure (kPa)(psi)		Type
14.00R20	20PR	-	-	10.00W	385	15.2	1236	48.7	17.5	22.0	5000	790	115	TT

UNDERGROUND MINE



GR503 L-5S RADIAL

- ▼ Deep tread depth available for long tire life.
- ▼ Robust shoulders with sidewall protection.
- ▼ Excellent adhesion in the most difficult conditions.

UNDERGROUND
MINE SERVICE



Size	Load index	TRA code	Speed index	Rim	Section width (mm)/inch		Overall diameter (mm)/inch		Tread depth (mm)/32nds		Load capacity (kg)	Inflation pressure (kPa)(psi)		Type
12.00R24	☆☆	L-5S	A2	8.50V	315	12.4	1275	50.2	53	66.8	6900	825	120	TT
17.5R25	☆☆	L-5S	A2	14.00/1.5	445	17.5	1400	55.1	78	98.3	8600	650	94	TT
17.5R25	☆☆	L-5S	A2	14.00/1.5	445	17.5	1400	55.1	78	98.3	8600	650	94	TL



GR505 L-5S RADIAL

- ▼ Deep tread depth available for long tire life.
- ▼ Robust shoulders with sidewall protection.
- ▼ Excellent adhesion in the most difficult conditions.

UNDERGROUND
MINE SERVICE



Size	Load index	TRA code	Speed index	Rim	Section width (mm)/inch		Overall diameter (mm)/inch		Tread depth (mm)/32nds		Load capacity (kg)	Inflation pressure (kPa)(psi)		Type
17.5R25	☆☆	L-5S	A2	14.00/1.5	445	17.5	1390	54.7	73	92.0	8600	650	94	TT
17.5R25	☆☆	L-5S	A2	14.00/1.5	445	17.5	1390	54.7	73	92.0	8600	650	94	TL

MULTIPURPOSE



GR301 RADIAL

- ▼ Stronger casing provides superior riding comfort.
- ▼ Steel belted tread design prevents tire puncture.
- ▼ Special tread compound enhances tread wearing.

MULTI PURPOSE TURCK



Size	Load index	TRA code	Speed index	Rim	Section width (mm)/inch	Overall diameter (mm)/inch	Tread depth (mm)/32nds	Load capacity (kg)	Inflation pressure (kPa)(psi)	Type
405/70R18	141/153	-	B/A2	13.00	407 16.0	1025 40.4	23 29.0	2575	380 55	TL
405/70R20	143/155	-	B/A2	13.00	407 16.0	1076 42.4	23 29.0	2725	380 55	TL

MINING DUMPING TRUCK



GR305 E-3 RADIAL

- ▼ Excellent traction due to wide and deep transverse grooves.
- ▼ Outstanding tire life and exceptional resistance to aggression.

MINING DUMPING TRUCK SERVICE



Size	Load index	TRA code	Speed index	Rim	Section width (mm)/inch	Overall diameter (mm)/inch	Tread depth (mm)/32nds	Load capacity (kg)	Inflation pressure (kPa)(psi)	Type
14.00R24	☆☆☆	E-3	B	10.00W	375 14.8	1370 53.9	29.5 37.2	5800	700 102	TT



GR306 E-3 RADIAL

- Excellent traction due to wide and deep transverse grooves.
- Outstanding tire life and exceptional resistance to aggression.

MINING DUMPING TRUCK SERVICE



Size	Load index	TRA code	Speed index	Rim	Section width (mm)/inch		Overall diameter (mm)/inch		Tread depth (mm)/32nds		Load capacity (kg)	Inflation pressure (kPa)(psi)		Type
14.00R25	☆☆☆	E-3	B	10.00	375	14.8	1370	53.8	27	34.0	5800	700	102	TT
16.00R25	☆☆☆	E-3	B	11.25/2.0	437	17.2	1492	58.7	31	39.1	8000	800	116	TL
16.00R25	☆☆☆	E-3	B	11.25/2.0	437	17.2	1492	58.7	31	39.1	8000	800	116	TL



GR308 E-3 RADIAL

- Unique compound for enhanced cut resistance and long tread life.
- Tough casing construction for enhanced impact and cut resistance support.

MINING DUMPING TRUCK SERVICE



Size	Load index	TRA code	Speed index	Rim	Section width (mm)/inch		Overall diameter (mm)/inch		Tread depth (mm)/32nds		Load capacity (kg)	Inflation pressure (kPa)(psi)		Type
14.00R25	☆☆☆	E-3	B	10.00/2.0	361	14.2	1354	53.3	27	34.0	5800	700	102	TT



GR307 L-3 RADIAL

- Excellent traction due to wide and deep transverse grooves.
- Exceptional resistance to aggression.
- Robust shoulder and enhanced bead offer outstanding tire life.

MINING DUMPING TRUCK SERVICE



Size	Load index	TRA code	Speed index	Rim	Section width (mm)/inch		Overall diameter (mm)/inch		Tread depth (mm)/32nds		Load capacity (kg)	Inflation pressure (kPa)(psi)		Type
14.00R25	☆☆☆	E-3	B	10.00/2.0	361	14.2	1354	53.3	27	34.0	5800	700	102	TT
14.00R25	☆☆☆	E-3	B	10.00/1.5	361	14.2	1354	53.3	27	34.0	5800	700	102	TL



GR401 E-4 RADIAL

- Unique compound for enhanced cut resistance.
- Tough casing construction for enhanced impact and cut resistance support.
- Deep lug pattern for long tread life.

MINING DUMPING TRUCK SERVICE



Size	Load index	TRA code	Speed index	Rim	Section width (mm)/inch		Overall diameter (mm)/inch		Tread depth (mm)/32nds		Load capacity (kg)	Inflation pressure (kPa)(psi)		Type
14.00R25	☆☆☆	E-4	B	10.00/2.0	361	14.2	1374	54.1	37	46.6	5800	700	102	TT
14.00R25	☆☆☆	E-4	B	10.00/1.5	361	14.2	1374	54.1	37	46.6	5800	700	102	TT
16.00R25	☆☆☆	E-4	B	11.25/2.0	432	17.0	1527	60.1	42	52.9	8000	800	116	TL
16.00R25	☆☆☆	E-4	B	11.25/2.0	432	17.0	1527	60.1	42	52.9	8000	800	116	TL



BIAS OFF-THE-ROAD TIRES TREAD PATTERN AND SIZE



LOADER AND EARTHMOVER



GX301 E-3/L-3 BIAS

- Strong tire casing offers strength needed in a loader application.
- Suitable for rocky or gravel surface in mines, quarries and construction sites.
- Solid performance and maneuverability on wet, soft or muddy surface.

LOADER AND DOZER SERVICE



Size	Ply rating	TRA code	Rim	Section width (mm)/inch		Overall diameter (mm)/inch		Tread depth (mm)/32nds		10km/h		50km/h		Type
										Load capacity (kg)	Inflation pressure (kPa)/(psi)	Load capacity (kg)	Inflation pressure (kPa)/(psi)	
16/70-20	10	L-3	13(SDC)	410	16.1	1075	42.3	17	21.4	5150	450/65	2900	350/51	TT
	14	L-3	13(SDC)	410	16.1	1075	42.3	20	25.2	5150	450/65	-	-	TT
15.5-25	12	E-3/L-3	12.00/1.3	395	15.6	1275	50.2	25	31.5	5600	400/58	3250	250/36	TL
17.5-25	12	E-3/L-3	14.00/1.5	445	17.5	1350	53.1	25.5	32.1	6150	350/51	3650	225/33	TL/TT
	16	E-3/L-3	14.00/1.5	445	17.5	1350	53.1	25.5	32.1	7300	475/69	4250	300/44	TL/TT
	20	E-3/L-3	14.00/1.5	445	17.5	1350	53.1	25.5	32.1	8250	575/83	5000	400/58	TL/TT
20.5-25	16	E-3/L-3	17.00/2.0	520	20.5	1490	58.7	28.5	35.9	8250	350/50	5450	275/40	TL/TT
	20	E-3/L-3	17.00/2.0	520	20.5	1490	58.7	28.5	35.9	9500	450/65	6000	325/47	TL/TT
	24	E-3/L-3	17.00/2.0	520	20.5	1490	58.7	28.5	35.9	10300	525/76	6700	400/58	TL/TT
23.5-25	16	E-3/L-3	19.50/2.5	595	23.4	1615	63.6	31.5	39.7	9500	300/44	6150	225/33	TL/TT
	18	E-3/L-3	19.50/2.5	595	23.4	1615	63.6	31.5	39.7	10500	350/51	6700	275/40	TT
	20	E-3/L-3	19.50/2.5	595	23.4	1615	63.6	31.5	39.7	10900	375/54	7300	300/44	TL/TT
	24	E-3/L-3	19.50/2.5	595	23.4	1615	63.6	31.5	39.7	12500	475/69	8000	350/51	TL/TT
26.5-25	20	E-3/L-3	22.00/3.0	675	26.6	1750	68.9	35	44.1	13200	350/51	8250	250/37	TT
	24	E-3/L-3	22.00/3.0	675	26.6	1750	68.9	35	44.1	14000	400/58	9250	300/44	TL/TT
	28	E-3/L-3	22.00/3.0	675	26.6	1750	68.9	35	44.1	15500	475/69	10000	350/51	TL/TT
	36	E-3/L-3	22.00/3.0	675	26.6	1750	68.9	35	44.1	20000	725/105	-	-	TT
29.5-25	28	E-3/L-3	25.00/3.5	750	29.5	1875	73.8	40	50.4	17500	425/62	11500	350/47	TL



GX302 E-3/L-3 BIAS

- Deeper tread depth provides excellent wear resistance and longer service life.
- Special compounds for exceptional wear and cut resistance.
- Directional tread pattern for excellent power transfer in forward operation.

LOADER AND DOZER SERVICE



Size	Ply rating	TRA code	Rim	Section width (mm)/inch		Overall diameter (mm)/inch		Tread depth (mm)/32nds		10km/h		50km/h		Type
										Load capacity (kg)	Inflation pressure (kPa)/(psi)	Load capacity (kg)	Inflation pressure (kPa)/(psi)	
16/70-20	10	L-3	13(SDC)	410	16.1	1075	42.3	20	25.2	-	-	2400	250/36	TT
	14	L-3	13(SDC)	410	16.1	1075	42.3	20	25.2	5150	450/65	-	-	TT



GX303S E-3/L-3 BIAS

- Strong nylon construction provides superior load capacity.
- The non-directional tread design provides a maximum traction and good resistance to slippagesites.
- Suited for services on constructions, municipal works and dirt and rock working conditions.

LOADER AND EARTHMOVER SERVICE



Size	Ply rating	TRA code	Rim	Section width (mm)/inch		Overall diameter (mm)/inch		Tread depth (mm)/32nds		10km/h		50km/h		Type
										Load capacity (kg)	Inflation pressure (kPa)/(psi)	Load capacity (kg)	Inflation pressure (kPa)/(psi)	
23.5-25	16	E-3/L-3	19.50/2.5	595	23.4	1615	63.6	30	37.8	9500	300/44	6150	225/33	TT
	18	E-3/L-3	19.50/2.5	595	23.4	1615	63.6	30	37.8	10500	350/51	6700	275/40	TT



GX305 E-3/L-3 BIAS

- Heavy tire casing offers strength needed in a loader application.
- Suitable for rocky or gravel surface in mines, quarries and construction sites.
- Special tread pattern ensures fewer vehicle vibrations.

LOADER AND EARTHMOVER SERVICE



Size	Ply rating	TRA code	Rim	Section width (mm)/inch		Overall diameter (mm)/inch		Tread depth (mm)/32nds		10km/h		50km/h		Type
										Load capacity (kg)	Inflation pressure (kPa)/(psi)	Load capacity (kg)	Inflation pressure (kPa)/(psi)	
23.5-25	20	L-3	19.50/2.5	595	23.4	1615	63.6	32	40.3	10900	375/54	7300	300/44	TT



GX307 E-3/L-3 BIAS

- Rugged tread design for superior cut protection.
- E3+ tread depth design enhances wearing life.
- Special tread compound ensures outstanding cut resistance.

LOADER AND EARTHMOVER SERVICE



Size	Ply rating	TRA code	Rim	Section width (mm)/inch		Overall diameter (mm)/inch		Tread depth (mm)/32nds		10km/h		50km/h		Type
										Load capacity (kg)	Inflation pressure (kPa)/(psi)	Load capacity (kg)	Inflation pressure (kPa)/(psi)	
17.5-25	12	L-3+	14.00/1.5	445	17.5	1350	53.1	36	45.4	6150	350/51	3650	225/33	TT
	16	L-3+	19.50/2.5	595	23.4	1615	63.6	45	56.7	9500	300/44	6150	225/33	TT
	18	L-3+	19.50/2.5	595	23.4	1615	63.6	45	56.7	10500	350/51	6700	275/40	TT
23.5-25	20	L-3+	19.50/2.5	595	23.4	1615	63.6	45	56.7	10900	375/54	7300	300/44	TT
	24	L-3+	19.50/2.5	595	23.4	1615	63.6	45	56.7	12500	475/69	8000	350/51	TT
	28	L-3+	19.50/2.5	595	23.4	1615	63.6	45	56.7	13600	550/80	8750	400/58	TT



GX306 E-3/L-3 BIAS

- Heavy tire casing offers strength needed in a loader application.
- Suitable for rocky or gravel surface in mines, quarries and construction sites.
- Special tread pattern ensures fewer vehicle vibrations.

LOADER AND EARTHMOVER SERVICE



Size	Ply rating	TRA code	Rim	Section width (mm)/inch		Overall diameter (mm)/inch		Tread depth (mm)/32nds		10km/h		Type
										Load capacity (kg)	Inflation pressure (kPa)/(psi)	
20.5-25	16	L-3	10.00(SDC)	342	13.5	906	35.7	17	21.4	1600	280/41	TT



GX308 E-3/L-3 BIAS

- Heavy tire casing offers strength needed in a loader application.
- Suitable for rocky or gravel surface in mines, quarries and construction sites.
- Solid performance and maneuverability on wet, soft or muddy surface.

LOADER AND EARTHMOVER SERVICE



Size	Ply rating	TRA code	Rim	Section width (mm)/inch		Overall diameter (mm)/inch		Tread depth (mm)/32nds		10km/h		50km/h		Type
										Load capacity (kg)	Inflation pressure (kPa)/(psi)	Load capacity (kg)	Inflation pressure (kPa)/(psi)	
17.5-25	12	E-3/L-3	14.00/1.5	445	17.5	1350	53.1	25.5	32.1	6150	350/51	3650	225/33	TT
23.5-25	16	E-3/L-3	19.50/2.5	595	23.4	1615	63.6	31.5	39.7	9500	300/44	6150	225/33	TT
	18	E-3/L-3	19.50/2.5	595	23.4	1615	63.6	31.5	39.7	10500	350/51	6700	275/40	TT



GX309 E-3 BIAS

- Classic undirected pattern design, suitable for a variety of road conditions.
- Special cold resistant formula design can meet the needs of low temperature environment performance is improved.

LOADER AND EARTHMOVER SERVICE



Size	Ply rating	TRA code	Rim	Section width (mm)/inch		Overall diameter (mm)/inch		Tread depth (mm)/32nds		10km/h		50km/h		Type
										Load capacity (kg)	Inflation pressure (kPa)/(psi)	Load capacity (kg)	Inflation pressure (kPa)/(psi)	
18.00-25	16	E-3	13.00/2.5	500	19.7	1615	63.6	30	37.8	10000	375/54	5600	275/40	TT



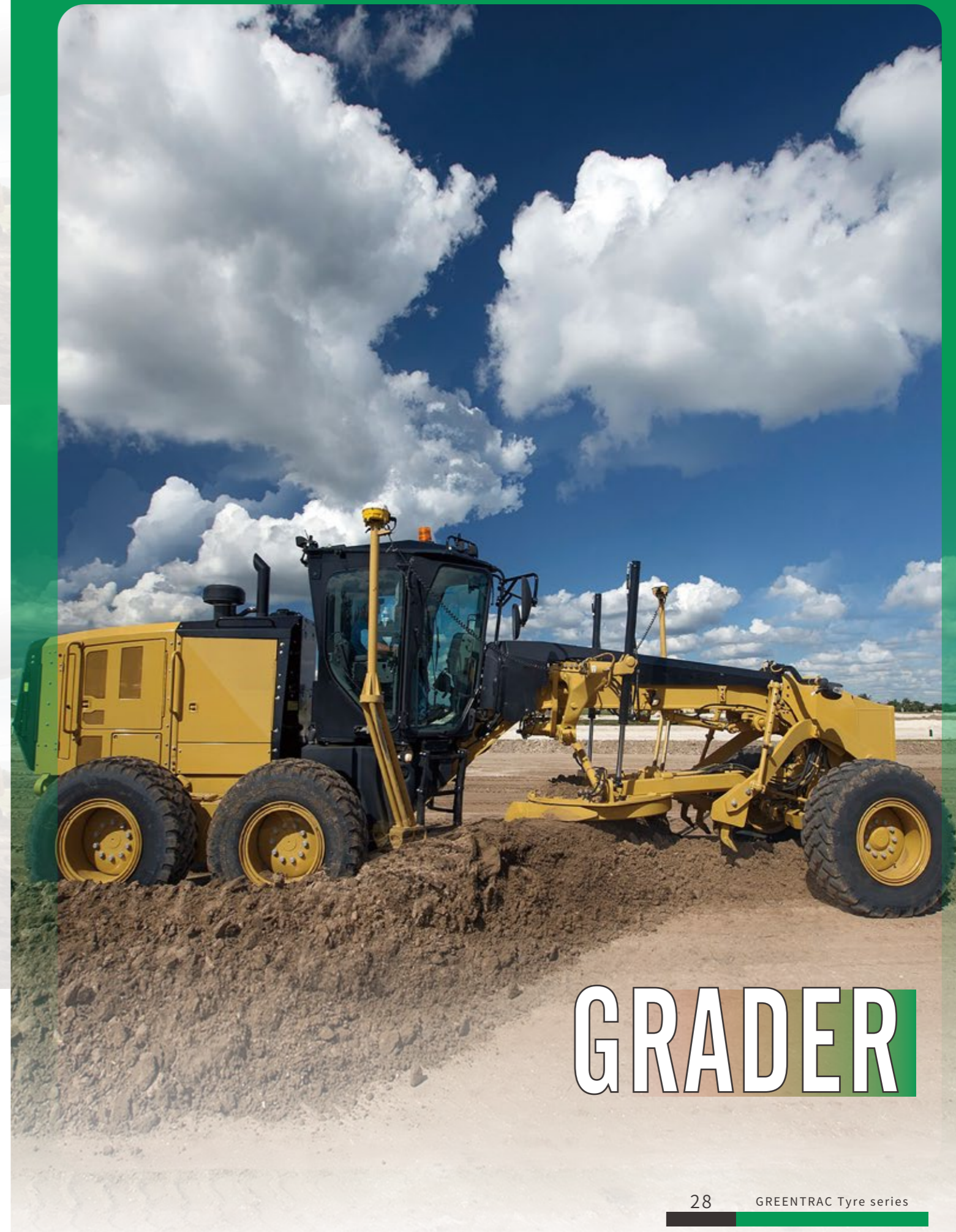
GX310 E-3/L-3

- Solid centerline tread pattern provides excellent cut resistance, smooth ride and extended wear.
- Non-directional tread pattern design provides all round traction and wear resistance.
- Aggressive lug design helps provide premium performance in harsh underfoot conditions.

LOADER AND EARTHMOVER SERVICE



Size	Ply rating	TRA code	Rim	Section width (mm)/inch		Overall diameter (mm)/inch		Tread depth (mm)/32nds		10km/h		50km/h		Type
										Load capacity (kg)	Inflation pressure (kPa)/(psi)	Load capacity (kg)	Inflation pressure (kPa)/(psi)	
29.5-29	28	E-3/L-3	25.00/3.5	750	29.5	1975	77.8	40	50.4	19000	425/62	12100	325/47	TL



GRADER



GX201 G-2 BIAS

- 45° tread pattern design provides superior traction.
- Proven tread pattern for increased traction on dirt and pavement.
- Special tread compound enhances the wearing life.

LOADER AND EARTHMOVER SERVICE



Size	Ply rating	TRA code	Rim	Section width (mm)/inch		Overall diameter (mm)/inch		Tread depth (mm)/32nds		10km/h		40km/h		Type
										Load capacity (kg)	Inflation pressure (kPa)/(psi)	Load capacity (kg)	Inflation pressure (kPa)/(psi)	
13.00-24 TG	12	G-2	8.00TG	335	13.2	1280	50.4	24	30.2	5600	450/65	2725	300/44	TL
	18	G-2	8.00TG	335	13.2	1280	50.4	24	30.2	6700	675/98	3500	450/65	TL
	26	G-2	8.00TG	360	14.2	1350	53.1	24	30.2	63500	425/62	3075	275/40	TL
14.00-24 TG	12	G-2	8.00TG	360	14.2	1350	53.1	24	30.2	7300	550/80	3650	350/51	TT/TL
	26	G-2	8.00TG	360	14.2	1350	53.1	24	30.2	7300	550/80	3650	350/51	TT/TL



GX202 G-2 BIAS

- Special tread lugs are tapered for greater traction and self-cleaning.
- Designed for good lateral traction, long wear and smooth ride.
- Tire material helps resist cuts and helps prevent sidewall cracking.

GRADER SERVICE



Size	Ply rating	TRA code	Rim	Section width (mm)/inch		Overall diameter (mm)/inch		Tread depth (mm)/32nds		10km/h		40km/h		Type
										Load capacity (kg)	Inflation pressure (kPa)/(psi)	Load capacity (kg)	Inflation pressure (kPa)/(psi)	
16.00-24 TG	12	G-2	11.25/2.5	430	16.9	1490	58.7	28.5	35.9	-	-	3650	225/33	TT
	16	G-2	11.25/2.5	430	16.9	1490	58.7	28.5	35.9	-	-	4000	275/40	TT
	20	G-2	11.25/2.5	430	16.9	1490	58.7	28.5	35.9	-	-	4505	325/47	TT



GX301 G-2 BIAS

- Heavy tire casing offers strength needed in a grader application.
- Suitable for rocky or gravel surface in mines, quarries and construction sites.
- Solid performance and maneuverability on wet, soft or muddy surface.

LOADER AND EARTHMOVER SERVICE



Size	Ply rating	TRA code	Rim	Section width (mm)/inch		Overall diameter (mm)/inch		Tread depth (mm)/32nds		10km/h		40km/h		Type
										Load capacity (kg)	Inflation pressure (kPa)/(psi)	Load capacity (kg)	Inflation pressure (kPa)/(psi)	
14.00-24 TG	16	G-2	8.00TG	36	14.2	130	53.1	25	31.5	7300	550/80	3650	350/51	TT



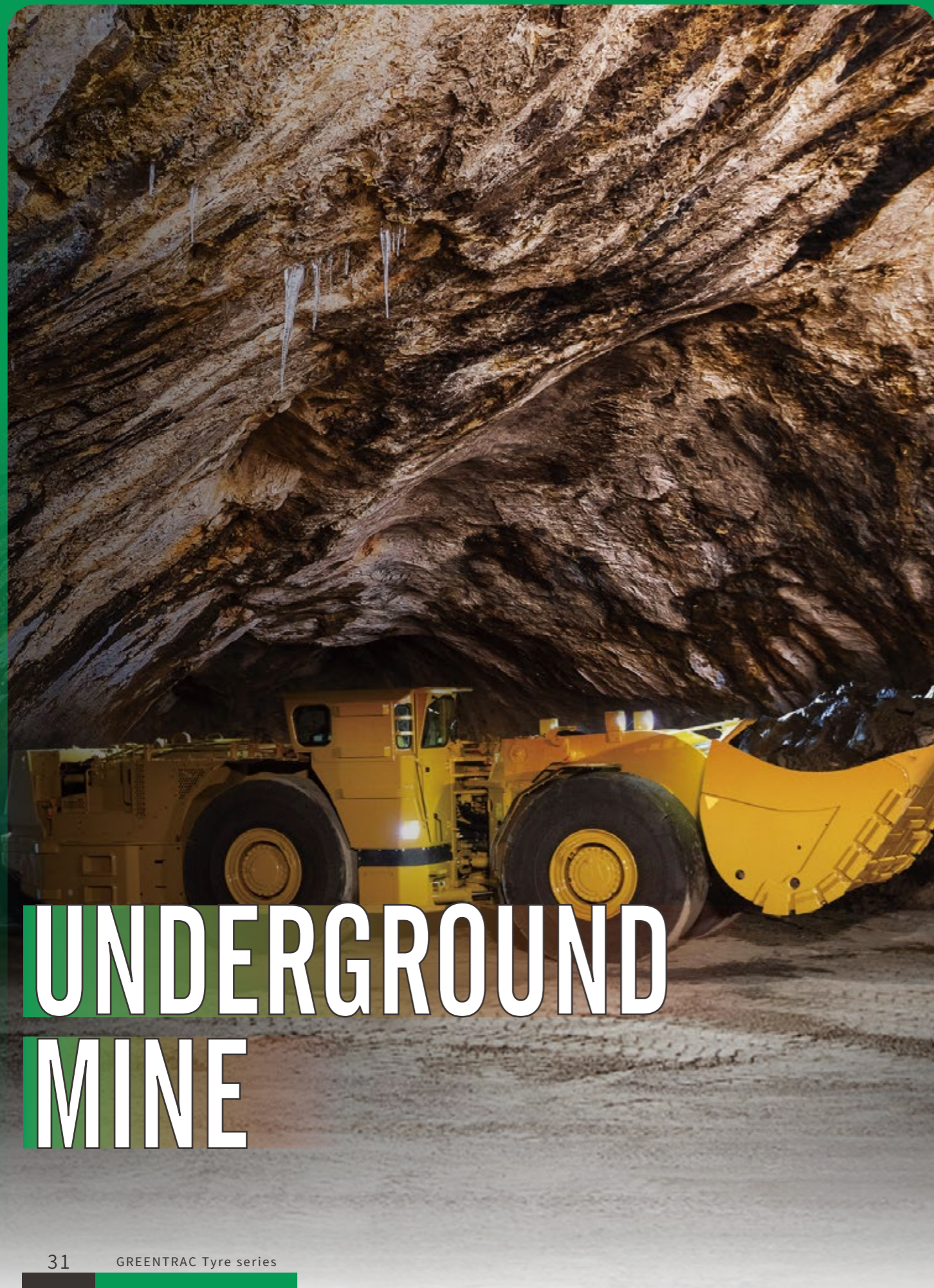
GX203 E-2/L-2 BIAS

- Precision angled bars maximize traction in soft soil.
- Open shoulder grooves are self-cleaning for excellent traction and less slipping.
- Directional tread pattern for excellent power transfer in forward operation.

GRADER SERVICE



Size	Ply rating	TRA code	Rim	Section width (mm)/inch		Overall diameter (mm)/inch		Tread depth (mm)/32nds		10km/h		50km/h		Type
										Load capacity (kg)	Inflation pressure (kPa)/(psi)	Load capacity (kg)	Inflation pressure (kPa)/(psi)	
15.5-25	12	E-2/L-2	12.00/1.3	395	15.6	1275	50.2	24	30.2	5600	400/58	3250	250/36	TL
17.5-25	12	E-2/L-2	14.00/1.5	445	17.5	1350	53.1	25.5	32.1	6150	350/51	3650	225/33	TT/TL
	16	E-2/L-2	14.00/1.5	445	17.5	1350	53.1	25.5	32.1	7300	475/69	4250	300/44	TT/TL
20.5-25	16	E-2/L-2	17.00/2.0	520	20.5	1490	58.7	28.5	35.9	8250	350/50	5450	275/40	TL
23.5-25	18	E-2/L-2	19.50/2.5	595	23.4	1615	63.6	31.5	39.7	9500	300/44	6150	225/33	TT/TL
	20	E-2/L-2	19.50/2.5	595	23.4	1615	63.6	31.5	39.7	10900	375/54	7300	300/44	TT
	24	E-2/L-2	19.50/2.5	595	23.4	1615	63.6	31.5	39.7	12500	475/69	8000	350/51	TT



UNDERGROUND MINE



GX401 E-3/E-4 BIAS

- ▶ Rugged tread design provides traction and added cut protection.
- ▶ Superior cut resistant tread compound enhances the wearing life.
- ▶ Special rubber compound protects against sidewall damage.

UNDERGROUND
MINE SERVICE



Size	Ply rating	TRA code	Rim	Section width (mm)/inch		Overall diameter (mm)/inch		Tread depth (mm)/32nds		10km/h		Type
										Load capacity (kg)	Inflation pressure (kPa)/(psi)	
10.00-20	18	E-3	7.5	278	10.9	1073	42.2	32	40.3	3900	910/132	TT
12.00-20	20	E-3	8.5	315	12.4	1175	46.3	32	40.3	6150	830/120	TT
14.00-24	28	E-4	10.0	375	14.8	1420	55.9	53	66.8	13500	1000/145	TT
16.00-25	36	E-4	11.25/2.0	430	16.9	1550	61.0	65	81.9	13600	975/141	TL



GX402 L-4S BIAS

- ▶ Smooth tread design eliminates lug tearing for longer wear.
- ▶ Excellent performance in hard rock quarry service applications.
- ▶ Extra heavy sidewall resists cuts and snags.

UNDERGROUND
MINE SERVICE



Size	Ply rating	TRA code	Rim	Section width (mm)/inch		Overall diameter (mm)/inch		Tread depth (mm)/32nds		10km/h		Type
										Load capacity (kg)	Inflation pressure (kPa)/(psi)	
10.00-20	14	L-4S	7.5	278	10.9	1073	42.2	35	44.1	3260	670/97	TT
	16	L-4S	7.5	278	10.9	1073	46.3	35	44.1	3535	770/112	TT
10.00-20	14	L-4S+	7.5	278	10.9	1073	55.9	45	56.7	3260	670/97	TT
	16	L-4S+	7.5	278	10.9	1073	61.0	45	56.7	3535	770/112	TT
12.00-24	20	L-4S	8.5	315	12.4	1275	50.2	40	55.0	6900	825/120	TT
	24	L-4S	8.5	315	12.4	1275	50.2	40	55.0	7500	975/141	TT



GX311 E-3 BIAS

- ▶ Rugged tread design provides traction and added cut protection.
- ▶ Superior cut resistant tread compound enhances the wearing life.

UNDERGROUND MINE SERVICE



Size	Ply rating	TRA code	Rim	Section width (mm)/inch		Overall diameter (mm)/inch		Tread depth (mm)/32nds		10km/h		Type
										Load capacity (kg)	Inflation pressure (kPa)/(psi)	
14.00-24	28	E-3	10.0	375	14.8	1370	53.9	27	34.0	10000	925/134	TT



GX501 L-4S/L-5S BIAS

- ▶ Smooth tread design eliminates lug tearing for longer wear.
- ▶ Excellent performance in hard rock quarry service applications.
- ▶ Extra heavy sidewall resists cuts and snags.

UNDERGROUND MINE SERVICE



Size	Ply rating	TRA code	Rim	Section width (mm)/inch		Overall diameter (mm)/inch		Tread depth (mm)/32nds		10km/h		Type
										Load capacity (kg)	Inflation pressure (kPa)/(psi)	
9.00-20	14	L-4S	7.0	255	10.0	1045	41.1	35	44.1	4375	725/105	TT
	16	L-4S	7.0	255	10.0	1045	41.1	35	44.1	4750	825/120	TT
10.00-20	14	L-4S	7.5	278	10.9	1073	42.2	45	56.7	3260	670/97	TT
	16	L-4S	7.5	278	10.9	1073	42.2	45	56.7	3535	770/112	TT
12.00-20	18	L-5S	8.5	315	12.4	1175	46.3	60	75.6	5800	775/112	TT
	20	L-5S	8.5	315	12.4	1175	46.3	60	75.6	6150	830/120	TT
12.00-24	16	L-5S	8.5	315	12.4	1275	50.2	55	69.3	6150	675/98	TT
	18	L-5S	8.5	315	12.4	1275	50.2	55	69.3	6500	750/109	TT
	20	L-5S	8.5	315	12.4	1275	50.2	55	69.3	6900	825/120	TT
	24	L-5S	8.5	315	12.4	1275	50.3	55	69.3	7500	975/141	TT
14.00-24	28	L-5S	10.00	375	14.8	1420	55.9	65	81.9	10000	930/135	TT
	32	L-5S	10.00	375	14.8	1420	55.9	65	81.9	10900	1050/152	TT
16.00-25	32	L-5S	11.25/2.0	430	16.9	1550	61.0	75	94.5	12500	875/127	TL
17.5-25	20	L-5S	14.00/1.5	445	17.5	1400	55.1	65	81.9	8250	575/83	TT
	32	L-5S	14.00/1.5	448	17.5	1400	55.1	65	81.9	11700	830/120	TT
18.00-25	32	L-5S	13.00/2.5	500	19.7	1675	65.9	85	107.1	15000	750/109	TL
	40	L-5S	13.00/2.5	500	19.7	1675	65.9	85	107.1	17000	950/138	TL



DESSERT APPLICATION SAND



GX701 E-7 BIAS

- ▶ Shallow tread depth provides excellent heat dissipation.
- ▶ Designed for Operating on Desert or Soft Ground, as well as Paved Roads.
- ▶ Rib design provides excellent steering stability and improved lateral traction.

DESSERT APPLICATION SAND SERVICE



Size	Ply rating	TRA code	Rim	Section width (mm)/inch		Overall diameter (mm)/inch		Tread depth (mm)/32nds		50km/h		Type
										Load capacity (kg)	Inflation pressure (kPa)/(psi)	
18-20	14	E-7	14.00T	455	17.9	1090	42.9	16	20.2	4625	360/52	TT/TL
20-20	16	E-7	14.00T	505	19.9	1180	46.5	17	21.4	6000	360/52	TL
22-20	14	E-7	17.0	555	21.9	1075	42.3	18	22.7	4125	280/41	TL



INDUSTRIAL



GX101 IND-4 BIAS

- Reinforced bead and sidewall area provide exceptional durability.
- Special tread compound enables less heat generation and additional scrub resistance.
- Optimal rubber-to-void ratio provides better stability while deeper tread depths enhance traction.

INDUSTRIAL SERVICE



Size	Ply rating	TRA code	Rim	Section width (mm)/inch		Overall diameter (mm)/inch		Tread depth (mm)/32nds		5km/h		10km/h		Type
										Load capacity (kg)	Inflation pressure (kPa)/(psi)	Load capacity (kg)	Inflation pressure (kPa)/(psi)	
12.00-24	24	IND-4	8.5	315	12.4	1245	49.0	40	50.4	11000	1000/145	10100	1000/145	TT
14.00-24	28	IND-4	10.0	375	14.8	1420	55.9	53	66.8	14500	1000/145	13500	1000/145	TT
16.00-25	36	IND-4	11.25/2.0	430	16.9	1550	61.0	65	75.6	-	-	13600	975/141	TL
18.00-25	40	IND-4	13.00/2.5	500	19.7	1675	65.9	65	75.6	24600	1000/145	22900	1000/145	TL



GX102 IND-3 BIAS

- Reinforced bead and sidewall area provide exceptional durability.
- Special tread compound enables less heat generation and additional scrub resistance.
- Optimal rubber-to-void ratio provides better stability.

INDUSTRIAL SERVICE



Size	Ply rating	TRA code	Rim	Section width (mm)/inch		Overall diameter (mm)/inch		Tread depth (mm)/32nds		10km/h		40km/h		Type
										Load capacity (kg)	Inflation pressure (kPa)/(psi)	Load capacity (kg)	Inflation pressure (kPa)/(psi)	
18.00-25	44	IND-3	13.00/2.5	500	19.7	1615	63.6	44	55.4	26100	1000/145	24300	1000/145	TL
21.00-25	40	IND-3	15.00/3.0	570	22.4	1750	68.9	44	55.4	29310	1000/145	27290	1000/145	TL



COMPACTOR



GX103 C-1 BIAS

- ▼ The wide and smooth riding tread allows much even pressure on road.
- ▼ Also the tread compound provides good resistance to oily chemicals.

COMPACTOR SERVICE



Size	Ply rating	TRA code	Rim	Section width (mm)/inch		Overall diameter (mm)/inch		Tread depth (mm)/32nds		10km/h		Type
										Load capacity (kg)	Inflation pressure (kPa)/(psi)	
13/80-20	16	C-1	8.5	325	12.8	1045	41.1	-	-	5450	800/116	TT



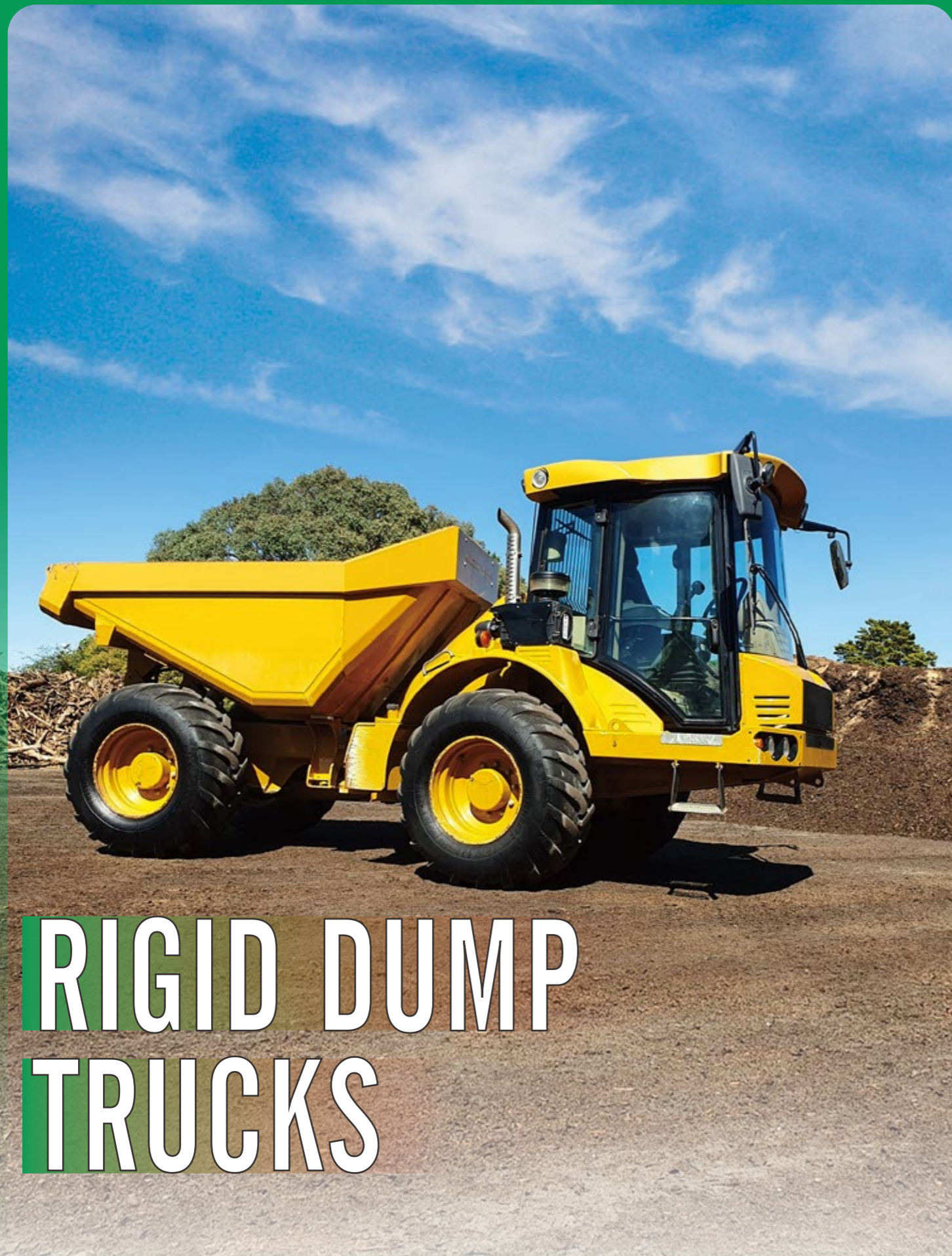
GX105 C-1 BIAS

- ▼ Rubber compound used provides good resistance to oily chemicals such as coal tar.
- ▼ Smooth tread which assures specific pressure distribution, ideal for guaranteeing maximum compacting of materials.

COMPACTOR SERVICE



Size	Ply rating	TRA code	Rim	Section width (mm)/inch		Overall diameter (mm)/inch		Tread depth (mm)/32nds		10km/h		Type
										Load capacity (kg)	Inflation pressure (kPa)/(psi)	
7.5-16	14	C-1	6.00G	215	8.5	810	31.9	-	-	2390	700/102	TT
9.00-20	14	C-1	7.0	255	10.0	1015	40.0	-	-	4375	725/105	TT



RIGID DUMP TRUCKS



GX312 E-3 BIAS

- Classic undirected pattern design, suitable for a variety of road conditions.
- Special cold resistant formula design can meet the needs of low temperature environment performance is improved.

RIGID DUMP TRUCKS SERVICE



Size	Ply rating	TRA code	Rim	Section width (mm)/inch		Overall diameter (mm)/inch		Tread depth (mm)/32nds		10km/h		50km/h		Type
										Load capacity (kg)	Inflation pressure (kPa)/(psi)	Load capacity (kg)	Inflation pressure (kPa)/(psi)	
18.00-25	32	E-3	13.00/2.5	500	19.7	1615	63.6	30	37.8	15000	750/109	8750	575/83	TT
18.00-25	36	E-3	13.00/2.5	500	19.7	1615	63.6	30	37.8	16000	850/127	9250	625/91	TT
18.00-25	40	E-3	13.00/2.5	500	19.7	1615	63.6	30	37.8	17000	950/138	9750	700/102	TT



GX309 E-3 BIAS

- Classic undirected pattern design, suitable for a variety of road conditions.
- Special cold resistant formula design can meet the needs of low temperature environment performance is improved.

RIGID DUMP TRUCKS SERVICE



Size	Ply rating	TRA code	Rim	Section width (mm)/inch		Overall diameter (mm)/inch		Tread depth (mm)/32nds		10km/h		50km/h		Type
										Load capacity (kg)	Inflation pressure (kPa)/(psi)	Load capacity (kg)	Inflation pressure (kPa)/(psi)	
18.00-25	32	E-3	13.00/2.5	500	19.7	1615	63.6	30	37.8	15000	750/109	8750	575/83	TT
18.00-25	36	E-3	13.00/2.5	500	19.7	1615	63.6	30	37.8	16000	850/127	9250	625/91	TT
18.00-25	40	E-3	13.00/2.5	500	19.7	1615	63.6	30	37.8	17000	950/138	9750	700/102	TT



DUMP TRUCKS



GX301 E-3 BIAS

- ▼ High strength tire body design makes the tire use safer.
- ▼ Special tread formula design, anti - cutting, anti - puncture, anti - flower performance is improved.

DUMP TRUCKS SERVICE 

Size	Ply rating	TRA code	Rim	Section width (mm)/inch		Overall diameter (mm)/inch		Tread depth (mm)/32nds		10km/h		50km/h		Type
										Load capacity (kg)	Inflation pressure (kPa)/(psi)	Load capacity (kg)	Inflation pressure (kPa)/(psi)	
16.00-25	28	E-3	11.25/2.0	430	16.9	1495	58.9	28.5	35.9	11500	750/109	6700	575/83	TT/TL
16.00-25	32	E-3	11.25/2.0	430	16.9	1495	58.9	28.5	35.9	12500	875/127	7390	650/94	TT/TL



INDUSTRIAL



GX106 BIAS

- ▼ The strong body design gives the tyres superior bearing and durability.
- ▼ Open shoulder tread pattern delivers traction in all weather conditions.
- ▼ Suitable for mixed road conditions.

INDUSTRIAL SERVICE



Size	Ply rating	Load capacity (kg)	Inflation pressure (kPa)(psi)		Section width (mm)/inch		Overall diameter (mm)/inch		Tread depth (mm)/32nds		Type	Rim
9.00-16NHS	14	4080	750	109	255	10.0	890	35.0	12.5	15.7	TT	6.50H
9.00-16NHS	14	2635	750	109	255	10.0	890	35.0	12.5	15.7	TT	6.50H



GX108 BIAS

- ▼ Low heat generation and high wear resistance tread compound formula can effectively prolong the service life of the tire.
- ▼ Industrial application compound and construction, strong resistance to puncture and sidewall damage.
- ▼ Block texture with strong grip for industrial vehicles.

INDUSTRIAL SERVICE



Size	Ply rating	Load capacity (kg)	Inflation pressure (kPa)(psi)		Section width (mm)/inch		Overall diameter (mm)/inch		Tread depth (mm)/32nds		Type	Rim
5.00-8NHS	6	850	600	87	137	5.4	470	18.5	12	15.1	TT	3.50D
5.00-8NHS	10	1150	1000	145	137	5.4	470	18.5	12	15.1	TT	3.50D
6.00-9NHS	10	1505	860	125	160	6.3	540	21.3	10	12.6	TT	4.00E
6.50-10NHS	10	1655	790	115	175	6.9	590	23.2	15	18.9	TT	5.00F
7.00-9NHS	10	1995	860	125	190	7.5	590	23.2	12	15.1	TT	5.00S
7.00-12NHS	12	2375	860	125	190	7.5	676	26.6	12	15.1	TT	5.00S
7.50-15NHS	14	3375	925	135	215	8.5	780	30.7	18	22.7	TT	6.0
8.25-12NHS	12	3060	720	124	235	9.3	765	30.1	12	15.1	TT	6.5
8.25-15NHS	14	3775	830	120	235	9.3	840	33.1	15	18.9	TT	6.5
8.25-15NHS	18	4240	1000	145	235	9.3	840	33.1	15	18.9	TT	6.5
9.00-16NHS	14	4495	760	110	255	10.0	890	35.0	16	20.2	TT	6.50H



GX107 BIAS

- ▼ Low heat generation and high wear resistance tread compound formula can effectively prolong the service life of the tire.
- ▼ Industrial application compound and construction, Strong resistance to puncture and sidewall damage.
- ▼ Block texture with strong grip for industrial vehicles.

INDUSTRIAL SERVICE



Size	Ply rating	Load capacity (kg)	Inflation pressure (kPa)(psi)		Section width (mm)/inch		Overall diameter (mm)/inch		Tread depth (mm)/32nds		Type	Rim
18x7-8NHS	16	1640	1000	145	173	6.8	465	18.3	16	20.2	TT	4.33R
6.50-10NHS	10	1655	790	115	175	6.9	590	23.2	15	18.9	TT	5.00F
6.50-10NHS	14	1975	1070	155	175	6.9	590	23.2	15	18.9	TT	5.00F
7.00-15NHS	12	2900	850	124	194	7.6	735	28.9	20	25.2	TT	5.50S
8.15-15NHS	12	3230	840	122	215	8.5	704	27.7	16	20.2	TT	7.0
28X9-15NHS	12	2790	830	120	215	8.5	704	27.7	16	20.2	TT	7.0
28X9-15NHS	14	3050	970	141	220	8.7	710	28.0	15	18.9	TT	7.0



GX109 BIAS

- ▼ Strong body design ensures superior bearing and endurance performance of the tire.
- ▼ Unique pattern is designed for longer tread life by preventing irregular wearing.

INDUSTRIAL SERVICE



Size	Ply rating	Load capacity (kg)	Inflation pressure (kPa)(psi)		Section width (mm)/inch		Overall diameter (mm)/inch		Tread depth (mm)/32nds		Type	Rim
10.00-15NHS	14	2800	750	109	280	11.0	935	36.8	12	15.1	TT	7.5



GX110 *BIAS*

- Large pattern block, step form design, to ensure the tire has a good driving performance and can prevent the tire bottom cracking.
- Low heat generation and high wear resistance tread compound formula can effectively prolong the service life of the tire.

INDUSTRIAL SERVICE



Size	Ply rating	Load capacity (kg)	Inflation pressure (kPa)(psi)		Section width (mm)/inch		Overall diameter (mm)/inch		Tread depth (mm)/32nds		Type	Rim
10.00-16.5NHS	12	2135	520	75	264	10.4	773	30.4	13	16.4	TL	8.25
10.00-16.5NHS	12	2375	620	90	264	10.4	773	30.4	13	16.4	TL	8.25
12.00-16.5NHS	12	2865	550	80	307	12.1	831	32.7	19.5	24.6	TL	9.75



GX112 *BIAS*

- Variable angled tread pattern reduces stone retention.
- Industrial application compound and construction, strong resistance to puncture and sidewall damage.
- Enhanced sidewall ensures high safety.
- Deepened tread and block texture with strong grip for industrial vehicles.

INDUSTRIAL SERVICE



Size	Ply rating	Load capacity (kg)	Inflation pressure (kPa)(psi)		Section width (mm)/inch		Overall diameter (mm)/inch		Tread depth (mm)/32nds		Type	Rim
18×7-8NHS	6	1640	1000	145	173	6.8	465	18.3	18	22.7	TT	4.33R
5.00-8NHS	10	1150	1000	145	137	5.4	470	18.5	15	18.9	TT	3.50D
6.00-9NHS	10	1505	860	125	160	6.3	540	21.3	15	18.9	TT	4.00E
6.50-10NHS	10	1655	790	115	175	6.9	590	23.2	16	20.2	TT	5.00F
7.00-12NHS	12	2375	860	125	190	7.5	676	26.6	21	26.5	TT	5.00S
28×9-15NHS(8.15-15)	14	3050	970	141	220	8.7	710	28.0	18	22.7	TT	7.0
8.25-15NHS	14	3775	830	120	235	9.3	840	33.1	23	29.0	TT	6.5
250-15NHS	18	4110	1030	150	250	9.8	735	28.9	23.5	29.6	TT	7.5
300-15NHS	18	5530	830	120	300	11.8	840	33.1	23.5	29.6	TT	8.0
7.50-16NHS	12	3195	790	115	215	8.5	805	31.7	22	27.7	TT	6.00G
9.00-20NHS	16	5595	860	125	259	10.2	1018	40.1	25	31.5	TT	7.0



GX111 *BIAS*

- Low heat generation and high wear resistance tread compound formula can effectively prolong the service life of the tire.
- The optimized pattern design ensures that the tire has excellent anti-skid performance and reduces rolling resistance.

INDUSTRIAL SERVICE



Size	Ply rating	Load capacity (kg)	Inflation pressure (kPa)(psi)		Section width (mm)/inch		Overall diameter (mm)/inch		Tread depth (mm)/32nds		Type	Rim
12-16.5LT	10	D1418 S1614	420	61	307	12.1	831	32.7	13	16.4	TL	9.75
12-16.5LT	12	D1650 S1850	520	75	307	12.1	831	32.7	13	16.4	TL	9.75



GX113 *BIAS*

- Variable angled tread pattern reduces stone retention.
- Industrial application compound and construction, strong resistance to puncture and sidewall damage.
- Enhanced sidewall ensures high safety.
- Deepened tread and block texture with strong grip for industrial vehicles.

INDUSTRIAL SERVICE



Size	Ply rating	Load capacity (kg)	Inflation pressure (kPa)(psi)		Section width (mm)/inch		Overall diameter (mm)/inch		Tread depth (mm)/32nds		Type	Rim
6.50-10NHS	10	1655	790	115	175	6.9	590	23.2	14	17.6	TT	5.00F
28×9-15NHS(8.15-15)	14	3050	970	141	220	8.7	710	28.0	16	20.2	TT	7.0